

LOUISIANA



Photographic Society

Focus

President's Message
page 2

Competition Info
page 3

Exhibits
page 7

Field Trips
page 9

Town Favorites
page 10

GSCCC Convention
page 16

Member Photos
page 22

**HAPPY NEW
YEAR
2014**

JANUARY EVENTS

January 16, 2013

7:00 pm

Monthly Meeting

Baton Rouge Garden Center

7950 Independence Blvd.

Baton Rouge, LA

Monthly Competition

Digital Projection

Open Theme

Images due by

Tuesday, January 14 at 8:00 pm



Cover photo : Renee Pierce

Louisiana Photographic Society
meets on the third Thursday
of each month at the

Baton Rouge Garden Center
7950 Independence Blvd.
Baton Rouge, LA

*Across from Louisiana State Police Head-
quarters*

Guests are always welcome!

Membership dues are \$25/year
Each additional family member \$5/year

PO Box 83834
Baton Rouge, LA 70884
www.laphotosociety.com



President's Message



A New Year, A New President!

What an exciting year is ahead for Louisiana Photographic Society. It will be our honor to host the Gulf States Camera Club Council Convention on the 60th anniversary of that organization's inception. GSCCC began here in Baton Rouge at a meeting held at the old State Capitol. There has already been a lot of activity to ensure a successful and memorable convention.

LPS has grown by leaps and bounds over the past few years. We are approaching two hundred members. We continue to offer exceptional speakers at our monthly meetings; field trips that take us to surprising places that aren't far from home; workshops that enlighten and educate; and opportunities to exhibit our photographs in various public venues, as well as in our own monthly newsletter, web galleries, and Facebook page. Our monthly competitions have become more and more competitive, and we continue to enter regional competitions through our association with GSCCC.

We have an exceptional executive board, and eager and energetic coordinators. We have several members who, without having official title, make name tags, set up and take down chairs and tables for meetings, and make sure the Garden Center is clean before we leave on meeting nights.

Thank you to all who work to make LPS run smoothly, and who selflessly share your knowledge with fellow members. I know that 2014 will be a wonderful year because of your continued commitment to LPS.

Each member has something to contribute to our organization. We welcome those of you who are ready to find a place for yourself in LPS. You will make new friends, and gain a sense of accomplishment in knowing that your contributions make LPS the great club that it is.

Happy New Year to each of you!

-David Arbour

Competition Changes

To: All Louisiana Photographic Society Members
From: TJ Graner- Monthly Competition Coordinator
Subject: Rewrite of the LPS Monthly Competition Guidelines

In light of the voting procedural changes that have been made during the past year, and with the introduction of a new category, Black and White Projection, it became apparent that the existing guidelines were out of date. In order to address this situation, a committee (Pat Beard, Cathy Smart, Debra Babin and I) evaluated all the current guidelines and came up with a solution to the incongruences that existed in many locations.

We are providing a [link to the proposed changes](#) for your review and information. It is hoped that the new guidelines will meet your approval. Our intention is to present these guidelines to the membership for approval at the January meeting. If approved, they will be posted on the website for all to read and use beginning with the February competition.

In the meantime, if you have and questions or comments please email me and I will be happy help you out in any way.

Tommy Graner

Summary of proposed changes

Section 3: Added Black and White category

Section 4: Clarified number of entries
Eliminated use of frames for prints
Changed submission deadline for digital projection

Section 5: Updated guidelines for judging

Section 6: Updated voting procedures to reflect current policy

Please read entire document as there may be other subtle changes.

2014 Competition Schedule

JAN	Projection	--- No Theme ---
FEB	Prints	Unusual Shapes
MAR	Projection	Photojournalism
APR	Prints	--- No Theme ---
MAY	Projection	Showing Motion
JUN	Prints	--- No Theme ---
JUL	Projection	Contrasting Colors
AUG	Prints	--- No Theme ---
SEP	Projection	Planes, Trains & Automobiles
OCT	Prints	--- No Theme ---
NOV	Projection	Autumn Events
DEC		Christmas Party



We still have three coordinator roles that need a leader. If you don't feel comfortable taking on one of the remaining roles on your own, perhaps you and a fellow member would consider joint-chairmanship. We have almost 200 members now. Surely we can fill our leadership positions from such a large group. Here are the open positions:

GSCCC Print Competition Coordinator

The GSCCC Print Coordinator submits prints supplied by LPS members for the GSCCC competitions. The GSCCC coordinator selects suitable prints for each category of competition. The Coordinator also arranges for judges when LPS is the judging club. The Coordinator also coordinates with GSCCC and provides materials for the GSCCC Newsletter.

Refreshment Coordinator

The Refreshment Coordinator arranges for drinks and snacks for the LPS meetings. The Coordinator contacts members and requests that they bring something to the meeting, and also has a monthly allowance that can be used to purchase snacks and drinks. The Coordinator also ensures that the meeting room is cleaned following the meeting.

Library Coordinator

The Library Coordinator maintains the LPS library and maintains records of materials checked out, checks in returned materials, and collects late fees. The LPS library is available on meeting nights.

If you are unsure whether you can perform the duties of these coordinator roles, please contact me to discuss. We need **YOUR** help. Email me, or call me at [225-955-9398](tel:225-955-9398).

David Arbour
LPS President and Website Coordinator

2014 Officers and Coordinators

Please contact us with your comments or concerns.

Officers

President:

David Arbour
president@laphotosociety.com

Past President:

Gene Bachman
pastpresident@laphotosociety.com

Treasurer:

Janet Gelpi
treasurer@laphotosociety.com

Vice President:

Linda Medine
vicepresident@laphotosociety.com

Secretary:

Cathy Smart
secretary@laphotosociety.com

Coordinators

Digital Projection:

Donald Ewing
dpcontestcoordinator@laphotosociety.com

Library:

Position Open
librarycoordinator@laphotosociety.com

Education:

Debra Canatella
educationcoordinator@laphotosociety.com

Monthly Competition:

Tommy Graner
monthlycompetitioncoordinator@laphotosociety.com

Equipment:

David Howell
equipmentcoordinator@laphotosociety.com

Newsletter:

Renee Pierce
newslettereditor@laphotosociety.com

Exhibits:

Kathy Reeves
exhibitcoordinator@laphotosociety.com

Programs:

Elizabeth Mangham & Pam Kaster
programscoordinator@laphotosociety.com

Facebook:

Stephanie Ross
facebookcoordinator@laphotosociety.com

Publicity:

Mark Claesgens & Barry Spears
publicitycoordinator@laphotosociety.com

Field Trips:

Ken Wilson
fieldtripcoordinator@laphotosociety.com

Refreshment:

Position Open

Greeter/Name Tags:

Stephanie Ross
facebookcoordinator@laphotosociety.com

Website:

David Arbour
websitecoordinator@laphotosociety.com

GSCCC Representatives:

Gene Bachman - Digital
Position Open for prints
GSCCCcoordinator@laphotosociety.com

Competition Review Chair:

Gene Bachman
president@laphotosociety.com

GSCCC Monthly Competition

GSCCC has a competition for prints and digital projection for most months of the year. Categories include Photojournalism, Nature, Black and White, and Pictorial.

We are starting off a new year. All previous images have been returned so we need to bring in new images to submit for competition.

Don't worry about what the category is each month, just bring in prints of your best images, especially those which have won monthly competitions here at LPS, to the meeting this month and the coordinator will submit them at the appropriate time.

Please email your digital submissions to Gene Bachman.

We are currently in need of a GSCCC coordinator. Please consider helping in this area.

In the **Pictorial** category, anything goes. It is ok to manipulate the image. Realism is not a requirement.

Photojournalism entries shall consist of pictures or sequences with informative content and **emotional** impact, including human interest, documentary and spot news. The journalistic value of the photograph shall be considered over pictorial quality.

No elements may be moved, cloned, added, deleted, rearranged, combined or changed in any way that affects the integrity of the image content. Color images can be converted to grayscale monochrome. Print, slide, or digital sequences may be entered by placing more than one picture in a single image.

Nature photography is restricted to the use of the photographic process to depict observations from all branches of natural history, except anthropology and archeology, in such a fashion that a well-informed person will be able to identify the subject material and to certify as to its honest presentation. The story telling value of a photograph must be weighed more than the pictorial quality while maintaining high technical quality. Human elements shall not be present, except where those human elements enhance the nature story. Photographs of artificially produced hybrid plants or animals, mounted specimens, or obviously set arrangements, are ineligible, as is any form of manipulation that alters the truth of the photographic statement.

No techniques that add to, relocate, replace, or remove pictorial elements except by cropping are permitted. All adjustments must appear natural. Color images can be converted to grayscale monochrome. Infrared images are not allowed.

LPS members usually submit 11 X 14 prints that are matted to 16 X 20. A clear sleeve to protect the image is encouraged along with a backing. Prints must be no larger than 16"x 20", either mounted or un-mounted. For a mounted print, the mounting board should be no larger than 20"x 24". There is no minimum size. Prints may be printed commercially or self printed.

Each print must be identified with a title, the maker's name, and the name of the club.

Arts Council of Livingston Parish Exhibit

133 Hummell Street
Denham Springs, LA 70726

Hang Date:

Saturday, January 4, 2014, at 10:30 a.m.

Artist's Reception and Mini-Seminars:

Saturday, January 11, 2014
11:00 a.m.

Speakers will be Tom Graner and Kitty Kuhnert.

Take Down:

Friday, January 31, 2014 between 10:00 a.m. and 2:00 p.m.

If you have any questions please contact
Kathy Reeves @ exhibitcoordinator@laphotosociety.com

*"In art the hand can never execute anything higher
than the heart can inspire"*

– Ralph Waldo Emerson

**The mission of LPS is to advance and promote the art of
photography in the River Parishes of South Louisiana.**

Eagle Expo & More

Visit the [website](#) for more info



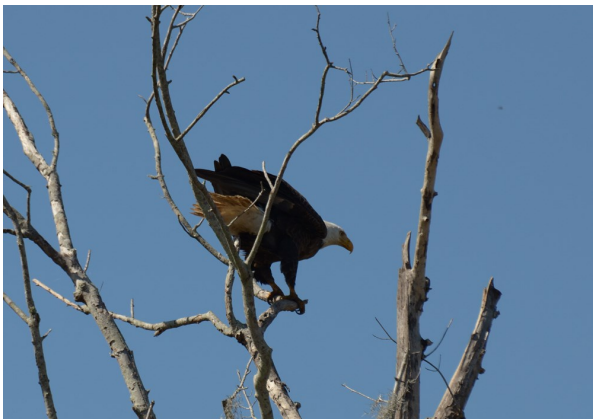
The Atchafalaya Basin, the largest overflow swamp in the country, is home to an abundance of wildlife, including rare and endangered species such as the American bald eagle. Our annual Eagle Expo includes boat tours into various waterways to view eagle's nests, raptor show, presentations on the American bald eagle, wildlife, flora, fauna and the culture of the area by wildlife professionals and photographers, and much more. Admission and registration required.



February 20 - 22, 2014

Morgan City, LA

(800) 256-2931 or (985) 395-4905



**Speakers Announced for the
9th Annual Eagle Expo & More:**

Friday, February 21, 2014

Kathy & Gary Clark - Birds of the South

Saturday, February 22, 2014

Bill Clark - Eagle Quest

Michael Sealy - Louisiana and the American Bald Eagle

Jane Patterson - Birds of the Atchafalaya

Field Trips

I. Topic: Louisiana wildflowers + side trip to Ft. Polk/Almost Eden Nursery + unusual cemetery

When: March 21-23, 2014. Leave at 1PM on March 21, 2014 from Baton Rouge

Where: Allen's Acres B&B, Pitkin, Louisiana

Cost: Friday + Saturday Nights@ \$100/night

Info: Each room has king bed; 2 rooms have King plus single; Breakfast Sat + Sun included in room rate; Chinese/Taiwanese/Cajun Supper meal for additional cost (fabulous meals!)

Tour Guide: Charles Allen PhD; his ability to find, identify, explain etc. has no equal.

Note: Sign up quickly for this trip; I believe there are 10-12 sleeping quarters; some of us might have to consider staying in DeRidder or Leesville. If you like wildflowers and nature, this is a trip you won't forget! Please call me 225-324-9232 (kbandphoto@att.net) if you and yours intend to go on this trip; we can carpool to save on gas etc.

II. Subject: How to photograph flowers and plants (wild, cultured, exotic, stolen, borrowed)

When: May 3, 2014

Where: LSU Burden Horticulture Center (Rural Life Property)

Time: 8AM to 4PM (lots of breaks)


Cost: \$60/per person (100% goes to Horticulture Center as fund raiser)

Lunch & Snacks: Included in Cost

NOTE: two guests to speak, demonstrate, discuss their topics of expertise

Topics:

- I want to learn to take good pictures with the camera I already own
- Identifying the flowers around you
- How to take pictures of flowers you like without breaking the bank
- Can I eat this? (a demonstration on Edible Plants!)
- Where can I buy plants I want that are not available at my local nursery?
- I want to get better at photography!
- I'm a good photographer: what can I learn from you?



RENEW YOUR MEMBERSHIP

DUES ARE \$25.00 PER YEAR
\$5.00 FOR ADDITIONAL FAMILY MEMBER

DUE NOW

January 2014 is here and let's be ready for the New Year. Happy shooting (photographs) in 2014! Louisiana in January is probably not the most favorite month for photography. I personally like to take this time of the year to go through some photographs that I have taken previously, edit these and either share on-line or print. Many photographers take so many images that they have a library of photos saved on external hard drives. And yes, of course, there are two external hard drives; one is a duplicate that is used for back-up. I almost never keep a photo on my hard drive in my computer.



On the other hand, this probably is a great time to experiment with black and white photography. Just look outside everything is so gloomy - not much color. But with black and white it is more about looking at the range of tones for a good photograph. Tone is anything that affects the lightness or brightness as well as the darkness of color. Black and white photography opens up a whole other world of photography. It is not about removing color from a photograph. When shooting for a black and white, a reflection or a shadow can give that extreme white or extreme black that is needed. In fact I believe this could improve color photography skills.



In Louisiana there is always something green and there are many different shades of green. Recently I went outside in my back yard and took some black and white images. I was amazed at the different shades of green. One may choose to either shoot in monochrome (black and white) in the camera or shoot in color and then convert to black and white in an editing program. With black and white photography use the lowest ISO setting allowable for the light provided to get that quality print. The ISO controls the sensitivity of a camera's sensor to a given amount of light. Use 100 ISO when possible. With this low ISO, less light enters the camera and produces less noise. The higher the ISO-more light, more noise. For instance, if it is a cloudy day, a 400 ISO may be necessary. A 400 ISO gives a great quality print for most size prints. Always get the image. Images taken at a higher ISO can usually be used for digital display. Consider the basics of photography;

adjust the aperture and shutter speed and ISO when shooting while focusing on shapes, lines, textures, reflections and shadows for impact. Look where the light is falling. Check your images on your camera for composition and light often. Portraits are beautiful in black and white. Educate yourself and then just go take those images!

Our next Louisiana Photographic Society meeting is being held February 20, 2014, at 7950 Independence Blvd., Baton Rouge, LA, and is held every third Thursday of each month. The scheduled guest speaker is Donald Hume. Visit his galleries at <http://www.humenaturephotography.com>

LPS will be hosting the GSCCC Convention April 24-27, 2013, at the Crowne Plaza, Baton Rouge, LA. Check our website for updates at <http://www.laphotosociety.com>



Speaker Info



Carrie Stansbury, with Cajun Coast Visitors & Convention Bureau will speak about the 2014 Eagle Expo in Morgan City.

The 9th annual Eagle Expo will be held in Morgan City, Louisiana, February 20-22, 2014. Eagle Expo is produced by the Cajun Coast Visitors & Convention Bureau in partnership with the Barataria-Terrebonne National Estuary Program (BTNEP), the Louisiana Department of Wildlife & Fisheries and the US Fish & Wildlife Service.

Other partners included, the Audubon Society, Conrad Industries, Johnny's Propeller Shop, and Louisiana Universities Marine Consortium (LUMCON), B & G Foods, Buquet Distributing, America's

Wetland Foundation and the Louisiana State University Museum of Natural Sciences.



The Expo includes seminars, boat tours into various waterways to look at eagles, a Friday evening presentation, a photography workshop with CC Lockwood, a raptor program including live raptors that we host for attendees, the general public and we also visit schools throughout the parish. Visit www.cajuncoast.com for more info.



PAM KASTER — NOVEMBER, 2013 SPEAKER

The speaker for November's LPS meeting was Pam Kaster, an author and photographer specializing in equine subjects. She is the author of four children's picture books, each dealing with equine subjects: *Molly the Pony*, *Zydeco Goes to Camp*, *Padre the Mustang* and *Patsy the Mule*. She is a lifelong equestrian, and a long-time photographer as well. Such a pairing of interests naturally led her to a career in equine photography, and her love of horses is evident in her books and photographs.

More recently, her dual interests led to the mentioned series of books, the first (Molly) having been published in 2008. Molly suffered an injury that necessitated the amputation of a leg, an event that most often leads to a horse's being euthanized, simply because the stress and trauma of surgery and attempted rehabilitation are overwhelming to the horse. Molly, however, exhibited an ability to cope with her injury that encouraged veterinarians to perform surgery to install a prosthetic leg, upon which she subsequently learned to walk and trot.

Kaster produced the children's book that told Molly's story, illustrated it with her own photographs, had it published by LSU Press and was rewarded with an ASPCA children's book award. In this process, she learned much about digital photography, the publishing business, professional photography, copyrights and trademarks, and the perils of photographic use on the internet. She said that a good method for learning many Photoshop techniques is to be forced to require its resources for a substantial project in the face of an impending deadline.

She also discovered that, although many photo images can be captured for personal use, for commercial publications, permissions must be obtained from all subjects, including the parents of children in photographs. The same applies to trademarked objects, even some that seem innocuous. She rarely photographs persons in public venues if they are recognizable. She had to edit one photograph to remove completely (via Photoshop) an image of a well-known and trademarked marshmallow product marketed in the form of baby chicks and rabbits. She also found herself on the other side of the copyright issue when an author of a blog used one of her photos of Molly. Although the blogger asked and received Kaster's permission, others lifted and republished the photo and it became virtually public domain, without any attribution for Kaster.

Kaster's other three books were self-published. Padre, a mustang colt, was born and roamed free on open range in Nevada. He was subsequently adopted through the Bureau of Land Management's adoption program and subsequently became a successful show horse. Legal permission again became an issue, and Kaster had to obtain and pay for photo releases from Padre's owners, who claimed that unauthorized photographs would devalue the animal. Padre is now an ambassador for the BLM's Wild Horse and Burro programs. Patsy was a mule that pulled a candy vendor's wagon in uptown New Orleans for six years. His owner freely gave permission for use of photos of Patsy.

For anyone interested in publishing books or photographs or both, Kaster recommends use of and frequent reference to *Business and Legal Forms for Photographers*, Google Alerts (to monitor for unauthorized usage), www.copyright.gov, and the Legal Freebies blog.

By Bob Connell

This - N-That

Benefits of PSA Membership

Individual Member Discounts

The following product and service providers offer discounts and exclusive offers to PSA that are a significant benefit of individual membership.

Adobe Software - 15% Discount

onOne Software - 10% Discount

Topaz Labs - 15% Discount

Nik Software 15% Discount new products & upgrades

AKVIS software 20% Discount

HDR Expose - 20% Discount & 32 Float - 10% Discount

iCorrect by PictoColor Software - 25% Discount

Photodex: ProShow Gold or Producer - 20% Discount

CyberLink - Photo Editing Tool: PhotoDirector - PSA Members

click link to get discount

uMark Software - Watermark hundreds of images in one go - 30% Discount

Oloneo PhotoEngine for HDR Processing - 15% Discount

Photo Equipment:

ioSafe Fireproof Waterproof External Hard Drives 10% Discount

M-Rock Camera Bags - 10% Discount

Trek-Tek Products - 30% Discount

Hunts Photo & Video - Free Shipping in Continental U.S.

GigaPan - 10% Discount on all items in store

Workshops, Tours, and Books:

National Geographic Traveler Seminars 10% Discount

Digital Days Photo Workshops - 20% Discount

Adventure Photography Photo Tours - \$75 or \$50 Discount

WANT Expeditions - \$200 Discount

Cultural Photo Tours with Ralph Velasco: [http://](http://www.RalphVelasco.com)

www.RalphVelasco.com PSA members: 10% off photo fee.

Equine Photography Workshops with Tony Stromberg - <http://www.tonystromberg.com/Workshops/html> - Click on the Paypal button to register and leave a note that you are a PSA member. 10% discount will be deducted from the final payment to PSA members.

Photo Quest Adventures - Specialized Digital Photography Workshops Across the Globe - \$200 off for PSA members - [download pdf for details](#)

Print Products:

Red River Paper - \$5.00 off your order. Free pack of paper with \$30 purchase.

Photobook America - Exclusive 50% Discount for PSA members

Shutterfly - Free shipping on photo book orders over \$30 - use discount code SHIP30

Canvas 4 Life - Photo to canvas provider. 20% discount on canvas print orders

Scanning:

ScanCafe - \$29 off first order (~100 scans)

Photo Gallery:

SmugMug Gallery - 20% discount on first year

Planning a Trip?

Seek the help of a PSA travel Aide!

Contact Travel Aide Director, **Shirley Ward, PSA, EPSA**, with your personal PSA membership number and information about your travel plans. Shirley will provide you with the name(s), addresses, telephone numbers, and email addresses of the volunteer(s) who are knowledgeable regarding your destination area. Please remember that these members are volunteers; therefore, you will need to allow ample time for the contacts, and you will also need to provide self-addressed stamped envelopes if the Aide is going to send you any material by U.S. mail. Contact Shirley at: luvscolor2@att.net



"To succeed you need to find something to hold on to, something to motivate you, something to inspire you"
- Tony Dorsett

Just for Beginners!

Carole Kropscot, APSA • Leawood, Kansas • ckropscot@yahoo.com

Part a series of short instructional articles for beginning photographers, Taken from the *PSA Journal*

Image and Screen Resolution

Why is resolution such a confusing subject? Because it has several different meanings depending on what it is describing. It is important because photographers are concerned about the sharpness of their images. This article presents the general idea about digital image resolution and how it interacts with screen resolution.

The image resolution is defined by the number of pixels for its height and for its width and also by multiplying those two together for the total number of pixels. This is the image's resolution as originally produced by the camera. For example, if the camera is set to take a photo at 4000 pixels wide by 3000 pixels tall, the image has a resolution of 4000px by 3000px. Simply the number of pixels, not pixels per inch!

Another way to state the image resolution is to use the total number of pixels in the image. This is the product of multiplying the height and width. In our example, 4000 times 3000 equals 12,000,000 pixels, or 12 megapixels.

A digital image contains the same number of pixels as you view it larger and smaller on a screen. Its resolution stays the same as you zoom in and out.

The amazing thing is that the screen resolution ALSO always stays the same. It is manufactured with one resolution. So how can a screen with a fixed resolution display digital images of a different resolution than the screen itself?

When the screen has the same resolution as the image, the image is being viewed at 100% magnification. Fortunately, the screen can increase or decrease the magnification of the pixels because pixels have no inherent size!

So, the size of the pixels is increased or decreased to fit the physical size of the screen or the physical size as desired by the viewer. This results in a display of more or fewer pixels per inch. This is when the term pixels per inch, or ppi, is relevant.

The small screens on mobile phones and tablets can display many, many pixels per inch; so many, in fact, that the individual pixels cannot be seen. This is why those images look so sharp.



The Coates Guest House will feature the work of Reggie Keogh at a solo exhibit in February. Many of you may remember Reggie as member and past-president of LPS. He travels widely and is an excellent travel photographer. His work may be viewed on his [Blurb site](#). We will send out invitations in January but wanted you to be aware of this wonderful opportunity to see Reggie's work.

LSU AgCenter issues call for entries for 2015 Get It Growing calendar

Professional or amateur nature photographers from Louisiana may submit their work and earn recognition if their photos are selected for the 2015 edition of the popular lawn and garden calendar.

LSU AgCenter faculty members will select approximately 40 photographs of Louisiana gardens, plants, vegetables and nature scenes for the calendar, according to Elma Sue McCallum, the project coordinator.

“The LSU AgCenter is a great resource for lawn and garden information and educational programs, and the Get It Growing calendar is a popular source for gardening tips and beautiful photos of flowers, plants and gardens from Louisiana photographers,” McCallum said. “The calendar has become the ‘must have’ item for gardening enthusiasts, and it’s great for anyone on your gift list.”

The 2014 edition of the calendar, which is a showcase of photos, monthly gardening tips, how-to information and other items based on Louisiana’s climate zones, currently is being sold. Online information and links to order the 2014 calendar are available by visiting [here](#).

Work on the 2015 calendar will begin over the next few months, and it will be published by the end of next summer, McCallum said.

A dozen of the photos will be featured as full-page, full-color images for each monthly page in the calendar, and one will be used on the cover, she said. The rest will be used throughout the calendar.

Photographers chosen for the featured monthly pages will receive 10 copies of the published calendar, and their names will be included with their photos in the calendar, she said. Other contributors also will be listed with their photos, and they will receive two copies of the published calendar.

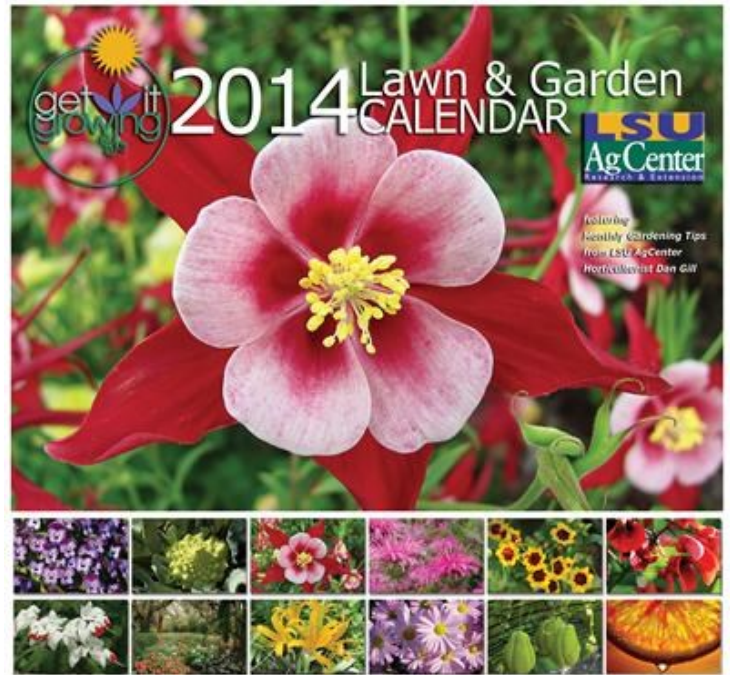
Submissions must be high-resolution digital images on CD with the photographer’s name, address, telephone number and email address attached, McCallum said. All images must be the original work of the photographer submitting the image.

Submission guidelines can be found on the Call for Entries form, which is available [online](#).

“We’re asking photographers to submit their favorite photos of lawns, gardens, flowers, trees and vegetables,” McCallum said. Each person is asked to limit their entries to 25 or fewer of their best photos.

The deadline for submissions is January 31, 2014. Entries must be mailed to Elma Sue McCallum, LSU AgCenter, 135 Knapp Hall, 110 LSU Union Square, Baton Rouge, LA 70803. CDs will not be returned.

For more information, contact McCallum at (225) 578-2462 or email emccallum@agcenter.lsu.edu.





Gulf States Camera Club Council Convention 2014

*Celebrating 60 years
1954-2014*



April 24- 27, 2014

REGISTRATION IS NOW OPEN!

Our convention webpage is <http://gsconvention2014.com>. We will continue to add information as it is confirmed . You may reserve a hotel room , register and send email to info@gsconvention2014.com. You can help us by talking to your friends who may enjoy taking photographs or want to learn more about photography but may not be members of our club. **LPS membership is not required to attend the convention and take advantage of the learning opportunities it will provide.**

We have secured speakers covering a wide variety of topics including Nature Photography Composition, Macro, Lightroom, Sports, Layers and Product Photography, Street Photography, Photo Critique, Birds, Still Life, Curious Critters, Composition, Photojournalism and Black & White.

The convention will be held at the Crowne Plaza Hotel on Constitution Ave. We will have speakers from Canon, Tamron and Sigma and are working on offering (for an additional fees) Nikon classes on the Thursday before the convention and on the Sunday of the convention.

Committee Chairpersons:

Banquet: Dianne Linder
Competition: Gene Bachman
Equipment: Mark Canatella
Field Trips: David Arbour
Finance: Janet Gelpi
Hospitality: Debra Canatella
Publicity: Mark Claesgens
Registration: Elizabeth Mangham

There will be plenty of opportunities to help out and we will make those know as the occasions arise and we get closer to the convention. If you have suggestions, we would love to hear from you.

Linda Medine & Renee Pierce,
Co-Chairs

Member Submissions

"Images of the Mediterranean and Adriatic" is the title of a collection of photographs from southern Europe by Tom Stigall. The photographs are on display at Highland Coffees near the LSU campus. The exhibit will continue at least through the end of January.

On display are enlargements made by the photographer from digital images captured while traveling in 2010 and 2012. Locations depicted are from France, Italy, Croatia, Montenegro, and Greece. Subject matter includes landscapes, street people, and still-life, as well as more iconic traditional subject matter.



Stigall has been a member of LPS for several years. He invites those interested to view his work at 3350 Highland Road, Baton Rouge.



Congratulations!



Linda Medine, first place

Thanks to Olympus for the opportunity to test drive the new and exciting OMD E-M1 cameras! Bennett's Camera in Metairie hosted Olympus who brought the new mirrorless cameras for attendees to test out. Our club members placed in the top 3 spots. . Congratulations to all!



Second place, Gene Bachman



Elizabeth Mangham, third place

Member Submissions

These pictures were taken by Linda Medine in the Historic Grand Coteau, Louisiana, located in St. Landry Parish between Lafayette and Opelousas on I-49 at exit 11. These were taken on November 19, 2013.









LPS OFFICERS

President:

David Arbour
president@laphotosociety.com

Vice President:

Linda Medine
vicepresident@laphotosociety.com

Past President:

Gene Bachman
pastpresident@laphotosociety.com

Secretary:

Cathy Smart
secretary@laphotosociety.com

Treasurer:

Janet Gelpi
treasurer@laphotosociety.com

Louisiana Photographic Society is a member of the Gulf States Camera Club Council.

The GSCCC Newsletter is available at:

<http://www.gulfstatesccc.org/html/newsletters.html>



<http://www.gulfstatesccc.org/>

Find us on Facebook



LPS COORDINATORS

Digital Projection:

Donald Ewing
dpcontestcoordinator@laphotosociety.com

Education:

Debra Canatella
educationcoordinator@laphotosociety.com

Equipment:

David Howell
equipmentcoordinator@laphotosociety.com

Exhibits:

Kathy Reeves
exhibitcoordinator@laphotosociety.com

Facebook:

Stephanie Ross
facebookcoordinator@laphotosociety.com

Field Trips:

Ken Wilson
fieldtripcoordinator@laphotosociety.com

Greeter/Name Tags:

Stephanie Ross
facebookcoordinator@laphotosociety.com

GSCCC Representatives:

Gene Bachman - Digital
 Position Open for prints
GSCCCcoordinator@laphotosociety.com

Library:

Position Open
librarycoordinator@laphotosociety.com

Monthly Competition:

Tommy Graner
monthlycompetitioncoordinator@laphotosociety.com

Newsletter:

Renee Pierce
newsletereditor@laphotosociety.com

Programs:

Elizabeth Mangham & Pam Kaster
programscoordinator@laphotosociety.com

Publicity:

Mark Claesgens & Barry Spears
publicitycoordinator@laphotosociety.com

Refreshment:

Position Open

Website:

David Arbour
websitecoordinator@laphotosociety.com

Competition Review Chair:

Gene Bachman
president@laphotosociety.com

The LPS website has a new, quick checklist for preparation of images for digital projection competitions. The new checklist can be found on the Monthly Competition page of the website, or by using this link:

<http://www.laphotosociety.com/userfiles/Checklist%20for%20Entering%20Digital%20Competition.pdf>



<http://www.psa-photo.org/>

Membership Drive

While we are always eager to welcome new members our Membership drive continues. Please remember to pay your dues and to invite your friends and colleagues to our meeting and encourage them to join us this year. **To continue to be eligible for fieldtrips and competitions and receive the newsletter, you must be current on your dues.** The membership form is at the end of the newsletter.

LPS Members are encouraged to submit photographs and articles for inclusion in FOCUS, the Louisiana Photographic Society Newsletter. Items received up to 3 days before the end of the month will be included in the following month's newsletter.

Send your submissions to:

newsletereditor@laphotosociety.com

Please be sure to read the sizing guidelines before submitting.



MEMBER OF PHOTOGRAPHIC SOCIETY OF AMERICA
AND GULF STATES CAMERA CLUB COUNCIL

Membership Form

Mail completed form and dues to:

Louisiana Photographic Society
P.O. Box 83834 ,Baton Rouge, LA 70884-3834

www.laphotosociety.com

WELCOME TO LOUISIANA PHOTOGRAPHIC SOCIETY

LPS communicates to members through website, e-mail, and monthly meetings. All members are encouraged to visit the LPS website at www.laphotosociety.com for the latest on club news and events. The monthly newsletter "FOCUS" is available on the website on the first day of each month. Please provide an e-mail address below to receive club updates. If you do not receive e-mail communications after 30 days, notify LPS at treasurer@laphotosociety.com.

Select one: ☐ **Membership Renewal** ☐ **New Member** – If you are a New Member, how did you learn about LPS:
☐ Current Member ☐ LPS Website ☐ Newspaper/Magazine ☐ Social Network ☐ Other _____

Select one: ☐ **Individual Membership \$25.00/year** ☐ **Student Membership \$5.00/year–Must be a current student**

Name _____ Date _____

Address _____ City _____ State _____ Zip _____

Home Phone (_____) _____ Cell Phone (_____) _____

E-mail Address _____

☐ **Additional Family Member \$5.00/year–ONLY available with the Individual Membership, not Student Membership**

Name _____ Date _____

Mailing Address _____ City _____ State _____ Zip _____

Home Phone (_____) _____ Cell Phone (_____) _____

E-mail Address _____

SPECIFY FOCUS OF PHOTOGRAPHY:

SPECIFY AREA OF LEARNING INTEREST:

SPECIFY AREA OF INTEREST IN CLUB PARTICIPATION:

- ☐ **Competition** (set up, tally votes, present ribbons)
- ☐ **Education** (plan/teach, set up workshops and seminars)
- ☐ **Equipment** (store, transport, set up for LPS functions)
- ☐ **Exhibits** (explore locations, set up/take down exhibits)
- ☐ **Field Trips** (plan and arrange to photograph at various sites)
- ☐ **Gulf States Camera Club Council** (GSCCC liaison, collect and submit entries for GSCCC competition)
- ☐ **Library** (display and maintain materials, check-in/out)

- ☐ **Programs** (plan speakers, make arrangements for speakers at monthly meetings)
- ☐ **Projection** (set up and operate equipment for digital projection competition)
- ☐ **Publicity** (publicize programs, meetings, events)
- ☐ **Refreshments** (plan and set up refreshments)

YOUR PARTICIPATION IS GREATLY APPRECIATED!