

November 2015

Volume 32 • Issue 11

LOUISIANA



Photographic Society

Focus

Steel Wool Painting
Page 34

Hot Air Balloons
Page 36

NOVEMBER EVENTS

November 7, 2015
Camera Basics Class
9:00 am and 1:00 pm
Goodwood Library

November 14, 2015
Oakley Plantation Trip

November 19, 2015
Monthly Meeting
7:00 pm
Goodwood Library

November 19, 2015
TableScapes Due

November 29, 2015
Lisa Largell Presentation



Cover photo: Renee Pierce

Louisiana Photographic Society
meets on the third Thursday
of each month at the
Goodwood Library
7711 Goodwood Blvd
Baton Rouge, LA 70806

Guests are always welcome!

Membership dues are \$25/year
Each additional family member \$5/year

PO Box 83834

Baton Rouge, LA 70884

www.laphotosociety.com



President's Message

This is the second to last newsletter article that I will be writing as the LPS 2015 President. It has been a good and very busy year for LPS and it has gone by so fast.

LPS still has a few more events for this year.

November 7th two beginner level classes will be taught - one in the morning and one in the afternoon at the EBR Library on Goodwood Blvd.

November 14th a field trip is scheduled for Oakley Plantation and Gardens.

November 19th is the last LPS meeting for the year.

November 21st tablescapes are due.

November 29th Lisa Langell will do a presentation on Birds and Nature. She is from Scottsdale, AZ.

December 8th is our Christmas and Awards Party. Please read more details about all these great events in the newsletter and website.

If you have any suggestions or would like to volunteer to help with LPS next year, please let one of the executive board or coordinator members know. Their names and emails are listed on the LPS website. When you volunteer and get involved in the LPS Camera Club, I will guarantee that you will learn more about the club and about photography.

Theresa Low will be LPS's President for 2016, and she is getting her team together and making plans for another productive and fun year. Don't miss the boat by sitting on the dock.

I can't express how much I appreciate the wonderful year LPS has had. Thanks to everyone for your time and talent. Please continue your support in 2016.

Don't forget to pay your dues for 2016. Thanks so much.

Linda Medine



November

Opportunities

Renaissance Festival in Hammond, LA

This is a great photo op! 9:45 AM to Dusk

Nov:7,8,14,15,21,22,27,28,29,

Dec:5,6,12,&13

<http://www.larf.net/Directory.php>

Veterans on Parade & Ceremony

November 8, 1:30-3:30 pm

Jefferson Avenue—Downtown Port Allen

<http://www.visitbatonrouge.com/event/Veterans-On-Parade-Ceremony/15387>

USS Kidd Veteran's Day Ceremony

November 11

At the Old State Capitol

11:00 am—1:00 pm

<http://www.uskidd.com/veterans-day.html>



In This Issue

President's Message	2
PSA Competition	5
Speaker Info	6
Education	7
Field Trips	9
Town Favorites	11
Competition Schedule	12
Competition Winners	13
Exhibits	32
Member Submission	34

Copyright

© Louisiana Photographic Society, 2015. Unauthorized use and/or duplication of this material or images/photographs without express and written permission from author and/or owner is strictly prohibited. Excerpts and links may be used, provided that full and clear credit is given to the photographer and Louisiana Photographic Society with appropriate and specific direction to the original content.





KEEP CALM AND PAY YOUR DUES

You can pay your 2016 dues now. Only \$25.00 per year.

- ☑ Outstanding speakers
- ☑ Workshops
- ☑ Image critique sessions
- ☑ Lagniappe classes
- ☑ Monthly competitions
- ☑ Fun, educational fieldtrips
- ☑ Award winning newsletter and website.

You may either bring the completed application (located at the end of the newsletter) an payment to the next meeting or mail to Louisiana Photographic Society, P.O. Box 83834 ,Baton Rouge, LA 70884-3834



PSA COMPETITION

PHOTOGRAPHIC SOCIETY OF AMERICA
PROJECTED IMAGE DIVISION
PID INTERCLUB - GROUP D



**Round 1 of the new year starts in November.
We need NEW images NOW.
Images are due December 5th!**

We are allowed to submit 6 images per round. Please send 2 or 3 of your best so the team has a good pool of images to choose from and can send a variety.

2015-16 Competition Dates

- Round 2 - January 2016
- Round 3 - March 2016
- Round 4 - May 2016

Format: JPEG only

Color Space: sRGB recommended

Image Size: HORIZONTAL - MAX 1024

WIDE; VERTICAL - MAX 768 TALL

File Name: Title of Image

Entry Deadline

LPS members in good standing may submit entries by the 5th of the month prior to each round; it is requested that members submit no more than 3 images per round

Submit Entries

Email to: psaentry@laphotosociety.com

Subject Line: PSA Competition

Body of Email: Title of Image - Your Name

Attach image

Category

Projected Image Division

General Category (open to all digital images, including color, B&W, and manipulations)

Image Requirements

Questions

If you have any questions or need assistance in preparing images, contact the PSA Rep at

psaentry@laphotosociety.com

Speaker Info

Charles Stutts, November Speaker His topic will be Still Videos

For the past five years Charles has been photographing nature, architectural monuments and cultural event around the world. His most recent gallery show was held in Mexico in June and was titled "People of Mexico". Charles is especially interested in Mexico because of its rapid industrialization and the decline of small home craft businesses. He documented this change through photographs taken on the street and inside the small shops of family owned businesses.

At the November meeting Charles will show us his still video from his most recent trip to the Guggenheim Museum of Modern art in Bilbao, Spain. His approach is to arrive at a location with a group, leave the group and walk around taking images of what he finds personally inspiring.

Charles publishes his work on YouTube at [youtube.com/user/history1939](https://www.youtube.com/user/history1939) and Goggle Plus at Charles W Stutts – Google +



LPS Learns Wildlife Photo Tips

Wildlife photographer Steve Uffman spoke to the Louisiana Photographic Society Oct. 15 with his tips for better animal photography. The Louisiana native and world traveler emphasized the importance of using the histogram to find the right tonal combination of aperture and f-stop, especially for extreme lighting conditions. He also emphasized pre-planning locations and focal lengths to be prepared when wildlife appear. He noted manual and automatic camera features both have their advantages.

Education/Lagniappe

Photographing Wildlife-- From Vision to Fruition
Sunday, November 29, 2015 3:00pm - 6:00pm
EBR Main Library on Goodwood Blvd.

If I told you we were going to photograph bears today, do you already envision the types of wonderful images you hope you'll capture through your lens? Have you experienced this in the past--only to return home with disappointing results?

Do you feel discouraged because you do not have a "long enough" lens, or feel your images do not turn out the way you had envisioned? This session will help take your photography from vision to fruition. Learn how to "get closer," photograph wildlife beautifully with most any lens, discover helpful techniques for shooting creatively, and more--all designed to help you create images that elicit more "oohs," "ahhs," and accolades from those who view your work.



Lisa will also demonstrate a few tips for Photoshop users on editing wildlife images gently, but professionally to bring out the most from your image.

This session will end with a Q&A session and a moving photography montage set to custom-composed music written and recorded by Eric Burgett, deemed by many as "the new piano man." Eric is an incredibly talented artist from Nashville, TN who has performed for the Nashville Ballet, numerous well-known musicians, and performs in his own band. He was inspired by Langell's photography and composed several pieces to accompany the images presented.

www.langellphotography.com

Facebook: <http://www.facebook.com/LisaLangellPhotography>

LPS Educational Workshop on High Dynamic Range (HDR) with Jay Patel **Saturday, January 30, 2016** **Jones Creek Library**

Jay will teach HDR and demonstrate the HDR software programs Photomatix and HDR Focus3. The afternoon session will be a hands on workshop to give the attendees the opportunity to practice what they learned in the morning workshop. Each person will create HDR images on their laptops. Jay will provide images or attendees may use their own.

What to Bring to the Workshop for the Afternoon Session

- ☒ Laptop computer
- ☒ Extension cord or enough computer battery power for 2 hours.
- ☒ Two software programs already installed on your laptop:
Photomatix and HDR Focus 3.
Each of these has a 30-day free trial period.
- ☒ Your images if you want to use yours.
(Take three shots of the same scene, each with a one-to-two stop difference or use the automatic exposure bracketing (AEB) function on your camera. Do this for each HDR image you want to work with.

Morning

Registration: 9:00 – 9:30

Workshop: 9:30 – 11:30

Lunch: 11:30 – 12:30

Afternoon

Hands On Session: 12:30 – 2:30

We hope you can plan to join us for this educational workshop! Be sure to register for this workshop! If you have any questions, please let me know. Thanks. Diane Linder, Education Workshop Coordinator for 2016.

We are planning the workshops for 2016 and still have a few details to work out but wanted to get the dates to you for planning purposes. Details will follow as they are confirmed.

April 30—Lightroom with Gene Bachman

July 16

Aug 13

Sept 3 -Bridget and Gail will present two sessions of the Basic Photography class

EBR Main Library on Goodwood.

Session 1 is from 9-1:00

Session 2 is from 2:00 - 6:00

New Members

I am excited to present a list of all the members who joined last month. When you see them at a meeting please take a few minutes to get to know them.

Tim Donnelly

Mike Jackson

Susan Jackson

Desiree Moreland

Linda Temple

LPS Member Gallery on Club Website

We currently have 2 image galleries, a members gallery and a field trip gallery.

Preparing Photos for Submission

- ◆ Crop/resize your photos to 640 pixels X 480 pixels
 - ◆ Resize your image to a maximum of either 640 pixels WIDE and/or 480 pixels HIGH. Width or height may be LESS, but not more than these maximums. Be aware that images with a vertical orientation must still not exceed 480 pixels high, and thus your horizontal will be much less than 640 pixels wide.
- ◆ Save them as JPEG format using medium or high compression.
- ◆ Shoot for 1MB to 2 MB file size.
- ◆ Title your photos as Your Name – Photo Title and save as JPEG. For example your saved file name should look like as shown below: ***John Cooper – Sunflower.jpg. This is the information that will show up on the bottom of the image in the slideshow***

How to Submit Your Photos

- ◆ Email **up to** ten photos each month to vicepresident@laphotosociety.com
- ◆ Specify either **Members Gallery** or **Field Trip Gallery** in the subject line.

These are the same sizing guidelines for submitting digital images for the monthly club competition winners gallery and GSCCC and PSA galleries.

Field Trips

We are also asking that you register to attend the trips. (There is a link on the website.) **Registration is NOT mandatory but is PREFERRED.** It will help us better plan to have enough seasoned photographers on hand to help and allow us to notify you should there be a change to the event. Thank you for your cooperation.

Audubon State Historic Site and Oakley Plantation and Gardens

**another photography adventure
THAT CHALLENGES YOUR CREATIVE VISION
led by Bernie Gilette**

NOVEMBER 14, 2015

**8:15 AM. ASSEMBLE AT DRUSILLA MC DONALD'S
TRAVEL TIME TO THE SITE: APPROXIMATELY 45 MINUTES
LOCATION: 11788 HWY 985, ST. FRANCISVILLE. LA**

Bring your photo toys, include your tripod. In addition to the walking trails through the beautiful gardens, the site features the main Oakley house and the restored plantation kitchen. Other points of interest include two slave cabins, a barn, tack room and museum. Numerous photo topics for all.

Entrance Fees

Oakley House and grounds tour: \$8.00 Adults 18-61; \$6.00 Seniors 62 and older
Grounds Tour Only: \$4.00 Adults 18-61 Seniors – free admission

Save the Date

December 24, 2015: Bonfires on the Levee

Elections

The proposed nominations have been made for election in the November meeting.

Vice President - Butch Spielman
Secretary - Cathy Smart
Treasurer - Janet Gelpi

Further nominations are welcome with the approval of nominee.



Merry Christmas to You and Your Family!

*You and a guest are invited to
The LPS Christmas Party*

*At the Home of Toni Goss
18733 Lake Harbour Ave
Baton Rouge, LA 70816*

*December 8th at 7:00 pm
Come join us for the FUN!*

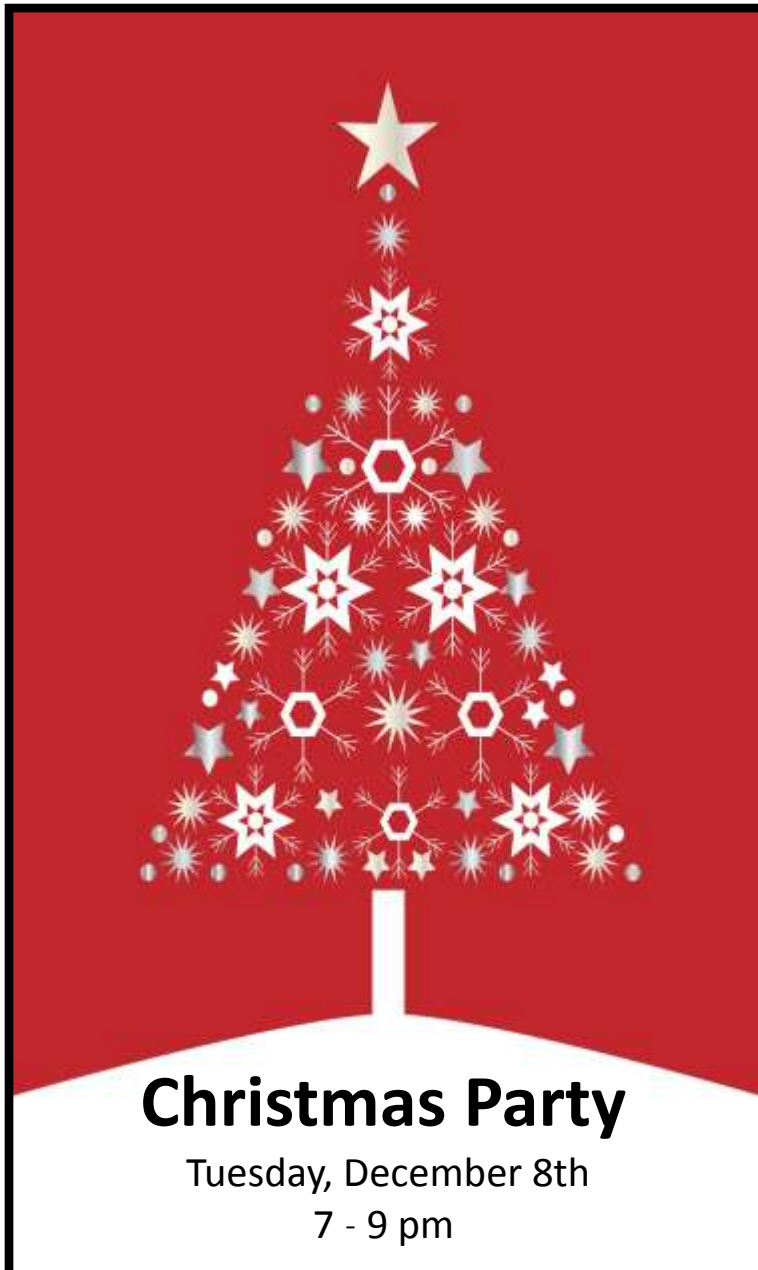
LPS will have the meats, condiments and cold drinks. Please plan to bring your favorite dish.

Dishes assigned by last name are:

A-E	Appetizer
F-M	Salad or Vegetable
N-S	Casserole
T-Z	Dessert

See you there!!!

Linda Medine's cell phone is 225 229 3475



Street Photography

Does this interest you? Admittedly street photography is a challenge for me. I don't like to interfere with a person's space. To become the best at street photography this is essential. Not to worry, most people welcome their photographs being taken!

The purpose of street photography is to capture the atmosphere of a city or particular event or at least one moment in time about an event. As a photographer we should always have a camera with us. A point and shoot or the first lens for your DSLR may serve you well for street photography. Black and white images really work well.

When working the crowd be conscientious of your surroundings and ask people's permission to take their photos. Try not to take images of people who are down on their luck. This may anger them or the people surrounding them. Always, have a smile on your face. One suggestion is if you are taking a photo of someone, offer them your business card with just your email address so that they can contact you for a copy of the image. Of course they need to describe the scene.

Most experts suggest using wide angle lens. But with wide angle lens



this means usually getting closer to the person. I personally like using my long zoom lens and this is a good lens to begin with. But ultimately work up to the wide angle lens.

A longer zoom lens discretely allows for the image of a person because of the distance allowed by a longer focal length. Also, with a wide angle lens one cannot always tell where the lens is pointing. A wide angle captures more of the scene where a zoom may capture more details.

I like to capture emotions or expressions and this is done better with a longer zoom lens or longer focal length. However with a long

zoom lens people can easily walk in front of the camera. When using a zoom lens, i.e. 70-200mm, use a shallow depth of field when shooting street photography. This allows the background to be blurred; your subject will stand out and there will be no doubt about the subject of the image. Also a shallow depth of field lets more light in the camera's sensor allowing for a faster shutter speed and a lower ISO. A faster shutter speed allows for sharper images when a subject is moving. Suggestions for preferred settings: f/4; 1/500 sec. ISO 400.

Ultimately tell your story with your camera! It doesn't matter what camera or what lens, just go out and tell your story about the world. Try getting closer to your subject for sharper images. Learn to use the equipment you have efficiently.



Our next LPS meeting is being held November 19, 2015 at 7:00 PM, and is held every third Thursday of each month. The meeting is held at the Goodwood Library, 1st Floor, large conference room. For more information visit our website at: [Louisiana Photographic Society](http://LouisianaPhotographicSociety.com) The scheduled guest speaker is Charles Stutts, who photographs cultural events around the world and has a passion for nature.

2015/16 Competition Schedule

To participate in exhibits and monthly competitions, you must be a member of LPS in good standing; your dues must be paid.

November 2015	Print	11/19	No Theme
2016			
January	Projection	1/21	Through a Window
February	Print	2/18	No Theme
March	Projection	3/17	Moonlight Night
April	Print	4/21	Photojournalism
May	Projection	5/19	Mailboxes
June	Print	6/16	No Theme
July	Projection	7/21	Reflections
August	Print	8/18	No Theme
September	Projection	9/15	No Theme
October	Print	10/20	“Spook”tacular
November	Projection	11/17	Shadows

All prints must be mounted/ matted such that they are self-supporting for vertical display.

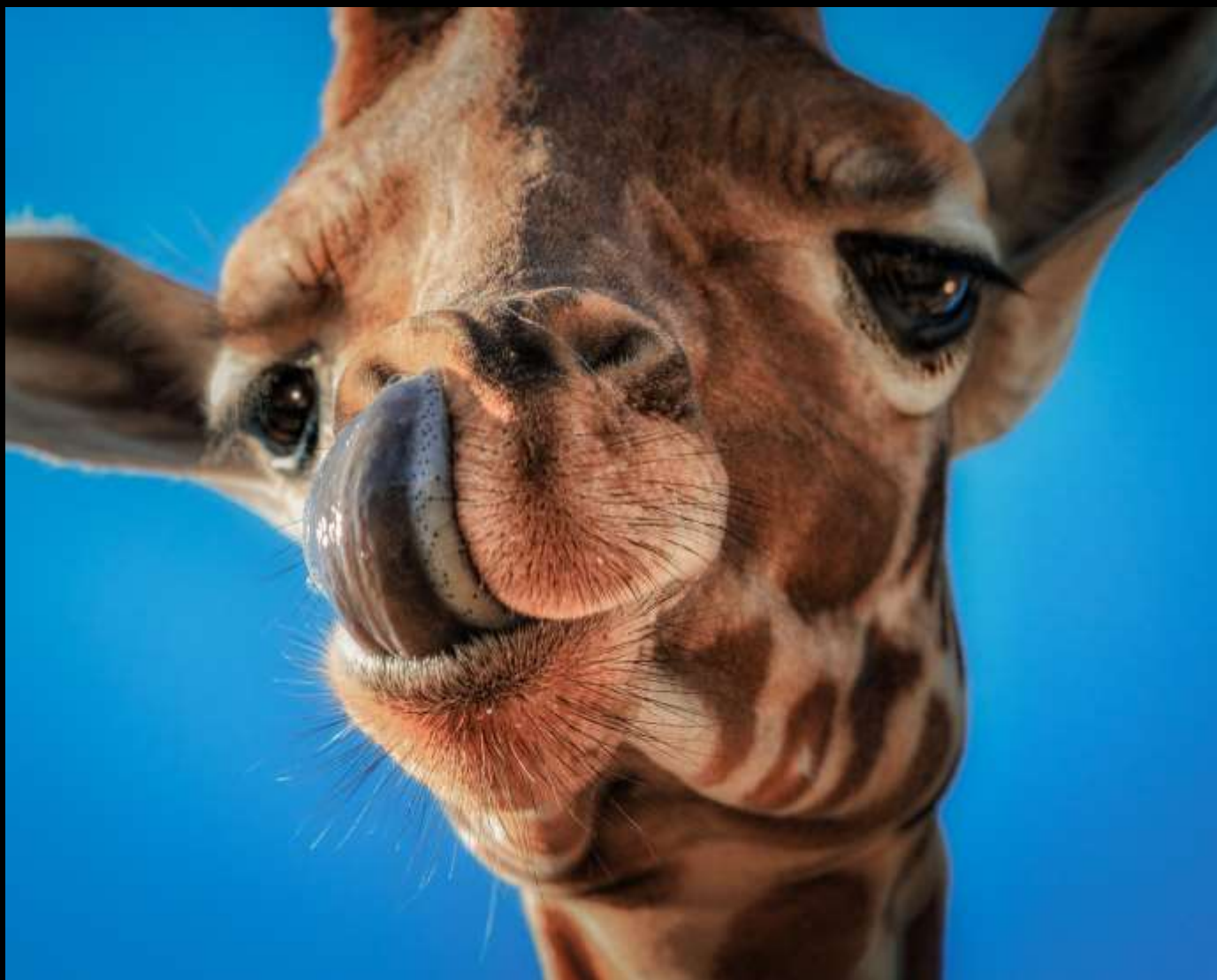
Frames are not allowed.

All photos shall be 5” X 7” or larger and not to exceed 24” in width. These are the outside dimensions and shall include the matting.

Reminder

Since this month is a print competition, if you receive a ribbon, you will need to submit a digital image for the newsletter and the image gallery on the website. Images should be emailed to monthlycompetitioncoordinator@laphotosociety.com and be sized according to the new guidelines. Complete instructions are available on the left side of the website under Quick Links.

Also, please remember to place your images facing the wall and a competition team member will reveal them when voting begins.



Yum, Yum
Cathy Smart
1st Place



Black Leopard
Kathy Reeves
2nd Place



Just Monkeying Around
Renee Pierce
3rd Place



Lioness
Pam Jenkins
1st Honorable Mention



Cathy Smart
Casey, The Silverback Gorilla
1st Place



What is He Dreaming About?
Kitty Kuhnert
2nd Place



Diving Penguin
Kathy Reeves
3rd Place



My Name is Baker
Linda Medine
Honorable Mention



Flamingo Curves
Jane Patterson
1st Place



Who, Me?
Helen Haw
2nd Place



Caged
Janet Gelpi
3rd Place



Sunbathing Beauty
Pat Riddick
1st Honorable Mention



Tim Donley
Keeping Watch
2nd Honorable Mention



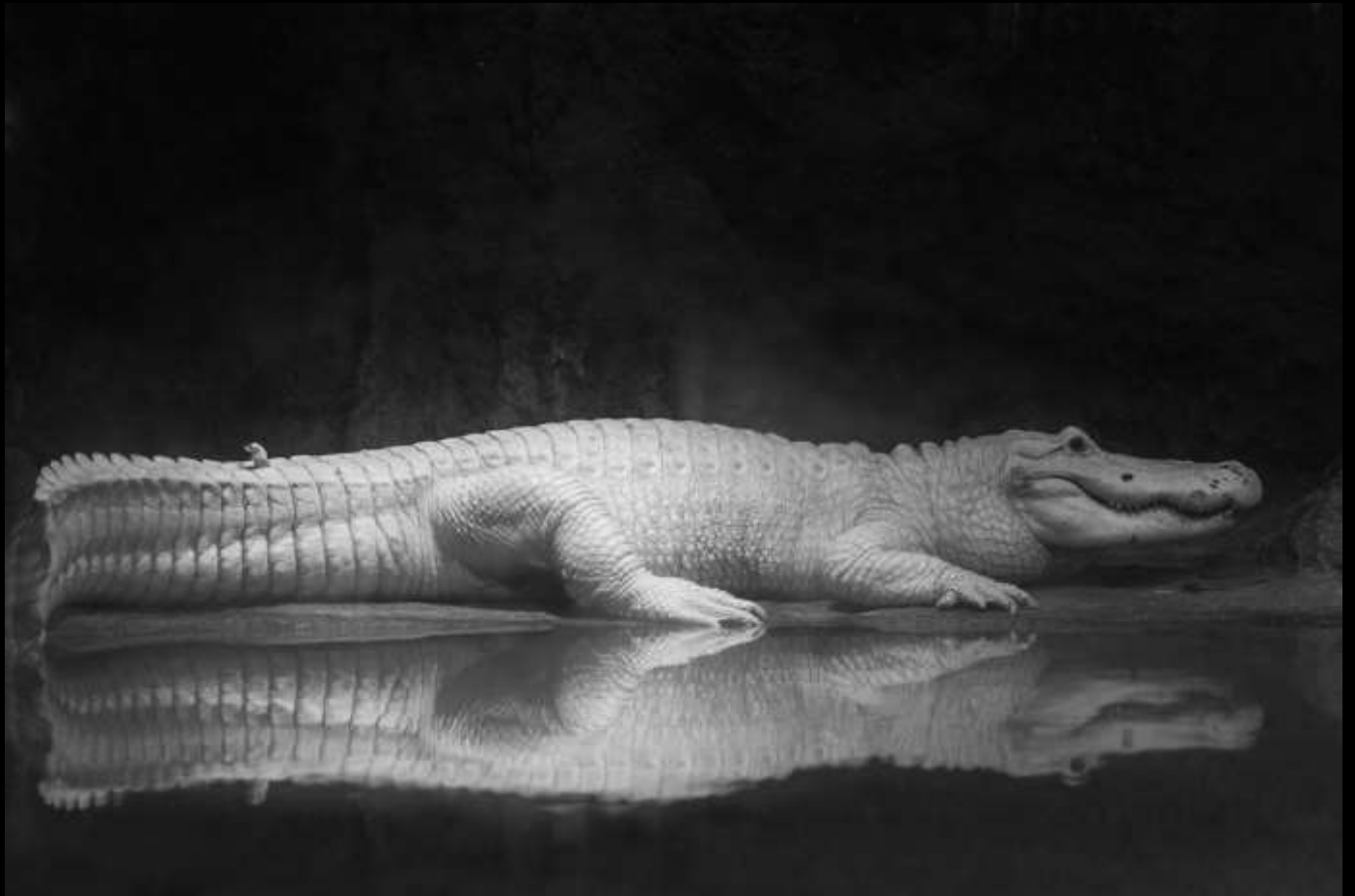
Standing Proud
Jackie Wilson
3rd Honorable Mention



Pondering
Darrel Leblanc
1st Place



Best Friends
Ashley Herrick
2nd Place



No Color Involved
Janet Gelpi
3rd Place



Melancholy
Moinul Mahdi
1st Honorable Mention



Watching You
Jackie Wilson
2nd Honorable Mention

2015-16 Exhibit Schedule

You must be a current, dues paid member in order to exhibit

Kathy Reeves exhibitcoordinator@laphotosociety.com

Tablescapes

Garden Center: 7950 Independence Blvd., Baton Rouge, LA 70806

Drop off Date: Saturday, December 21, 1 - 4 pm

Exhibit Date: Saturday, February 20, 1 - 4 pm and Sunday, February 21, noon- 3 pm

20% commission on all photos sold. Name, title, phone number and price should be firmly attached to the back of your image.

This is a fundraising event by the Baton Rouge Garden Club at the Garden Center. They will use our photos as part of their Tablescapes using the colors and themes from the photography to coordinate their table settings and displays. ---The images should not be of flowers but can include flowers in a landscape or other, just not close-up of blossoms. (See example to the right.)

They will need 30 to 40 photos; all may not be used in the Tablescapes but will be displayed and credited. A list of prices for our photos will be available to attendees. As this is a fund raiser for the Garden Center, our exhibitors and members will be required to pay the \$5 entrance fee to view the Tablescapes as do the Garden Club members and exhibitors

If you are planning on providing photos for this exhibit please let me know by November 1st.



Arts Council of Livingston Parish Exhibit, Reception and Mini Seminar

January 2016

133 Hummell Street, Denham Springs, LA70726 (street next to the Antique District)

Drop off date: Saturday, January 2nd from 10:00 AM to 12:30 PM (You will be required to fill out and sign an Exhibit Form at the time of drop off) All photos must be for sale, add a 20% commission to your price.

Reception and Seminar: Saturday, January 9th 2016 from 10:00 AM to 1:00 PM (if you are exhibiting you are expected to bring a dish.)

Presenters: Gene Backman, Rick LeCompte and Earl Arboreaux.

Pick Up Date: Saturday, January 30th 10:00 am and 1:30 pm. Please be sure to sign your photo out with the office.

Louisiana State Archives Exhibit (Louisiana Theme)

April 2016

3851 Essen Ln, Baton Rouge, LA 70809

Details TBA

Arts Council of Greater Baton Rouge Exhibit June 2016

Firehouse Gallery 427 Laurel Street Baton Rouge, La 70801

Details TBA All photos must be for sale, add a 30% commission to your price.

Goodwood Library Exhibit (Includes a digital projected exhibit)

October 2016

Hanging date: Saturday, October 1st at 10:30



In addition to the interclub competitions you, as an individual member of PSA, can enter contests. Some are digital and some are print. Categories include [Individual Creative](#), [Individual Portrait](#), [Photo Essay](#), [Nature](#), [Photojournalism](#), [Photo Travel](#), and [Pictorial Print](#). By visiting the links provided you will find all the guidelines and deadlines for submitting as well as galleries of previous winners. We as a club are limited to 6 images every other month but you as an individual member may submit on your own. I encourage you to consider [joining PSA](#).

Here is a partial list of the member benefits you receive for only \$45.00 a year:

- Opportunity to submit articles for potential publication in the *PSA Journal*
- Access to My PSA free web site services (e.g., Image Evaluation, Mentors, Consultants, resource links, up-to-date product and book reviews)
- Free online Individualized Photography Course, Advanced Photography Course, and Image Analysis Course
- **Free Study Groups:** online for digital images and via mail for prints
- Free services (e.g., Species Identification Service, Photo Travel Planning Service, Digital Product Information)
- Publication of photos on the PSA web site (e.g., a photo in the New Member Gallery on joining, in the Show Your Stuff Gallery on renewing for year two, and in ROPA Galleries following receipt of a PSA Distinction)
- Creation of a **personal photo gallery** on the PSA web site for posting up to twenty (20) images and a biography
- **Competitions** for specific topics/themes (e.g., Creative, Portrait) or format (e.g., 3D, digital essays, story boards, B&W prints)
- Reduced fee for PSA Adventures (e.g., Humanitarian trip to Cuba, cruises)
- **Discounts** on photography-related products and services

Congratulations, Cindy Hunt
on completing the Advanced Photography Course,
Beyond the Rule of Thirds



Digital membership - (Adult or Youth)	Includes online and mobile access to PSA Journal (NO printed PSA Journal by mail)
Digital Membership - Adult	\$45
Standard Membership - (Adult or Youth)	Includes printed copy of PSA Journal by mail AND complimentary access to online and mobile PSA Journal
Adult Membership	\$60

Member Submissions

Steel Wool Photography

Moinul Mahdi

One day I was thinking about doing some light painting photography and I found the steel wool photography very interesting. I started doing some research about how to do it and the equipment I need. I want to say that, this is not an original idea by any means and this kind of pictures has been around for many years. Once I got the idea about how to do it, I chose tiger stadium as my subject. I like to shoot tiger stadium as my subject whenever I think of any experimental project (You can also checkout my picture in the August newsletter, level B competition, where I shoot the tiger stadium reflection inside a water bubble). But for the steel wool photography it was a bit risky to do it in front of the tiger stadium as it involved fire. So before I explain how I did the steel wool photography, I would like to mention that, there is risk involved in creating this effect and I highly recommend to follow some safety measures like: wearing protective clothing, covering the hair, eye goggles, etc.

First you need some steel wool which you can buy from any hardware store or online. I bought mine from Walmart. When selecting the steel wool, choose anything with a grade "0" or below (some are labelled "00" or "000", more zeros means finer wool). Finer wool will give you a shorter burn time with less intense spark trails. You also need a medium sized metal cooking whisk, a lighter and a flexible metal string. The metal whisk will help to hold the steel wool in place and the string will help to spin the whisk to create sparks. All of these things are very easily available and will cost you less than \$10. The picture shows all the materials I used.



To take the picture, you need a camera with manual mode, a tripod and a shutter release. I used a white balance card to adjust my white balance to get rid of some orange and yellow from my image. Based on your location and surrounding lights, you might not need to do a prior white balance or you can also do it in post processing as well.



Before White Balance



After White Balance

Once you have everything ready, put your camera on a tripod, and set your exposure using manual mode. Always aim for a high shutter speed (above 6 seconds) so you can capture the spark trails. Also, try to minimize any camera shake (use shutter release, mirror lockup and a stable tri-

pod). For my picture, I used my Canon 60D with an 18mm lens. I used a shutter speed of 30 seconds with an aperture of f/13 and an ISO of 100. You can use any lens and can play with these settings depending on your subject and perspective. I also used manual focusing and to set the focus plane I asked one of my friend to stand exactly at the spot where I was going to spin the steel wool. After focusing my friend, I switch the focusing from auto focus to manual focus mode. There was enough light in front of the stadium so I didn't had to use any flashlight to set my focus point. But if you are planning to do it in a dark place, you might have to use a flashlight to set your focus point.



After I setup my camera, I stuffed the steel wool inside the whisk and tie the string to the end of the whisk. I used about 4 feet of string. Then, I used the lighter to light the steel wool on fire and spin it around my face. I asked my friend to release the shutter when I start spinning the whisk. I had to do some trial shots to get my desired spark



trails. When I get my desired shot, I took another shot with the same setup but without any steel wool painting. Finally, I blend the two pictures using Photoshop to make me invisible and also did some minor adjustments (contrast,

highlight, shadows etc.).

Some useful tips: (a) Find a location where there is nothing flammable nearby (b) Always wear protective cloths and also keep a fire extinguisher handy if possible (c) Spin the steel wool in different patterns to get different spark trails (d) Shoot Raw so you can make fine adjustments to color temperature and exposure in post-processing.

Here is another example of steel wool photography which I did recently in front of the LSU Lake using the same technique. However, I used an off-camera flash to add some more lights to the picture.



Web resources to get you started

<http://content.photojojo.com/>

<http://www.instructables>

<http://photoextremist.com>

<http://digital-photography-school>

<http://petapixel.com>

Up, Up and Away in a Beautiful Balloon

By Nancie Clark

I wish! Setting my sights a little closer to the ground, I attended the [Ascension Hot Air Balloon Festival](#) balloon glow recently.

Once a Baton Rouge event, several years ago it moved to the Lamar-Dixon Fairgrounds in Gonzales, LA. I never attended the Baton Rouge event, because I always heard about the parking issues. The fairground puts all those problems to rest with its plentiful lot and grass parking.



Being my first 'glow', I didn't know what to expect aside from balloons and fire. Many of the balloons were already inflated at my arrival. A line of people waited for a ride in the tethered balloon. For a price, children and adults experienced the fun of a hot air balloon. A great event for the family, lawn chairs and blankets spread out all along the front of the field. This flood of people meant one thing, I headed for the back of the field! I was here to photograph the glow.

On my way thru the crowd, I did enjoy seeing Tweedy and Sylvester bobbing happily overhead. The sun was beginning to set and added a natural glow to skies.



The balloons in the back of the field were still in various stages of being inflated. The balloon is called "the envelope".

After the envelope is stretched out, they use a large fan (inflator) to inflate it.



Holding the sides (throat) open, the balloons start to take shape. Crew members help the pilot in this process. This festival had volunteer opportunities to [work as crew](#) on the balloon. It's worth checking into, if you're interested learning more about ballooning.



After filling them with air, the pilots begin to heat the air with the burner. The burner is attached to the top of the basket. The flames are so colorful and amazing! The pilot or crew make sure everyone is standing in safe positions before they begin.

As the balloon heats up, the pilot works to get the basket in an upright position. This is one of my favorite shots of the night!

The balloons begin to come to life as the sun sets. I still had no idea what was going to happen, so I found an open space with my tripod and waited. The moon peeked over the top of the balloons as they floated gracefully.

At 7:00pm, the glow began. All the balloons danced slowly in the breeze and pilots intermittently discharged their burners to keep them inflated. The

sound of the burner flame sounds so consuming. As the announcer lists the balloons represented, pilots responded with a 'glow' from their balloon. Quite a few states were represented this evening. I didn't know which balloons were going to glow, so I took photos quickly. Claw'D, the Crazy Crab, was one of the specialty balloons and one of my favorites.

The true "beauty of the glow" came with the darkness of night. The vivid balloon colors illuminated by the white-hot flames filled the field with a warm, peaceful glow.



One final glowing moment before the official event ends. The festival had a variety of food booths, carnival rides and a craft fair to enjoy. The evening ended with some great music playing in the background as I headed to the carnival rides for some slow shutter photography.

I am definitely hooked on photographing balloon glows. Next festival, I also want to capture the race. Seeing the sky full of brightly colored balloons is fun no matter what your age.



Read the full blog post and see additional images at <http://www.apertureofmysoul.com/2015/10/04/balloon-hot-air-glow/>

GSCCC

REQUIREMENTS FOR SUBMISSION OF GSCCC COMPETITION PRINTS

Pictorial Color, Black & White, and Nature Prints:

- ☑ maximum print size 16x20
- ☑ can be mounted or un-mounted, mounting board should be no larger than 20x24
- ☑ no minimum print size

You are welcome to submit the maximum size, but it is not necessary or recommended, as most LPS members submit prints sizes in the range of 11x14 or 8x10.

Photojournalism Prints:

print sizes are 8x10 or 8x12 mounted or un-mounted.

All prints submitted for GSCCC competition must be marked on the back with the following: title of print, maker's name, LPS, and the category.

Review the rules at www.gulfstatesccc.org to ensure that your print meets the eligibility requirements for the category of entry. Prints may be either commercially or self-printed. Clear sleeve for protection is optional, but recommended.

Congratulations to GSCCC Winners!



Robin Stevens
3rd Place Black and White Pictorial
One in a Million



Kathy Reeves
2nd Place Pictorial
Foggy Morning



LPS Members have an opportunity to give back to the Community and our Veterans

LPS member Bruce Roberts' wife and other artists are painting pictures to hang in the halls and resident rooms in the Louisiana Veterans Home in Jackson, Louisiana.

They are asking for 11x14 images matted and framed to 16x20 with a wire on the back ready to hang—just like you would do for an exhibit.

Landscapes, flowers, peaceful scenes, or uplifting colorful images will be fine. This would be a donation to the Veterans Home.

If you are interested in doing this please bring the framed image to the next LPS Meeting on November 20, 2015. You can put your name on the image and put your name and contact information on the back of the image too.

We only received 8 images last month and feel like more of our members would like to contribute. These veterans gave so much for us, surely we can provide beautiful images to brighten their day.

Your help is appreciated.



La Louisiane Enchantée

Members Dede Lusk, Beverly Coates and Toni Goss have launched the sale of their collaborative book, *La Louisiane Enchantée*, “the enchanted land of Louisiana.” The Tripod (as the three are known), has traveled Louisiana’s highways and byways, cameras in hand, to create these black and white images that show three different perspectives of Louisiana’s coastal marshes, cypress swamps and rural countrysides. The books are available at the LSU Museum of Art located in the Shaw Center for the Arts or through their websites at dedelusk.com, bevcoates.com and tonigoss.com.



Awards and Ribbons:

The Art Show in the Orangerie

First Place* – \$400

Second Place* – \$300

Third Place* – \$200

Honorable Mention* – \$150

Four Merit Awards

The Photography Show in the Conference Center

First Place *– \$400

Second Place* – \$300

Third Place* – \$200

Honorable Mention*– \$150

Four Merit Awards

*All award-winning works will be displayed following the show at the Shaw Center for the Arts.

Eligibility

This show is open to all U.S. residents 17 years of age and older and to all art media except video and film. Works must be original, must have been produced in the past three years and must never have been exhibited in Brush With Burden. All artwork must be priced and available for sale. Please consider your framing expenses when pricing your piece.

Submission

The 2016 Brush with Burden Art Show and Sale's entry process will be conducted using CaFÉ™ (CallforEntry.org™), a Web-based service that allows artists to submit images and entry fees online.

- Log on to callforentry.org to set up your artist profile.
- Select "Brush With Burden 2016 Art Exhibition."
- Upload images. (These must first be added to your portfolio).

Entries

- A maximum of six entries will be accepted from any artist.
- File format: JPEG only.
- File dimensions: No smaller than 1920 pixels on the longest side.
- File resolution: 72 ppi/dpi (standard Web resolution).
- File size: 5 megabytes maximum.
- Uploaded image should show artwork or photograph only. No framing should be visible.

Works to be in the exhibition will be selected based on the digital images submitted. Only one digital image should be submitted for each piece.

Fees

A nonrefundable fee of \$20 for one entry and \$15 for each additional entry (up to six entries) should be submitted. Fees can be paid online or can be mailed to: LSU AgCenter Botanic Gardens, Attn: Pamela Rupert, 4560 Essen Lane, Baton Rouge, LA 70809. Make checks payable to BHS, with "Brush With Burden entry fee" in memo line. All checks must be postmarked by Jan. 20, 2016. (Registration is not complete until fee is received.)

http://www.lsuagcenter.com/en/our_offices/research_stations/Burden/News/BrushwithBurden.htm

Relics: 2015 Photo Project



In our ongoing effort to catalog every cultural nook and cranny in the region, we turn our gaze (and lens) to the forgotten, faded things. That crumbling bridge spanning out to nowhere. That echoing building with its occupants long gone. The theme is "Relics," and we're opening the door to your photo submissions.

Each month in 2015, we will profile a different photograph on the back page of *Country Roads*, accompanied by an interview with the adventurous photographer. Are you up to snuff?

Here's how to enter:

Send your submissions to photos@countryroadsmag.com with the subject line "Relics: 2015 Photo Project." Include a short description of the photo (including a title for the photo, location, and history if you can provide it).

All photographs should be at least **300dpi** and larger than **4.5 inches**. Photographers may submit up to four photos at once. We will be accepting submissions all year.



LPS OFFICERS

President:

Linda Medine
president@laphotosociety.com

Vice President:

Theresa Low
vicepresident@laphotosociety.com

Past President:

David Arbour
pastpresident@laphotosociety.com

Secretary:

Cathy Smart
secretary@laphotosociety.com

Treasurer:

Janet Gelpi
treasurer@laphotosociety.com

Louisiana Photographic Society is a member of the Gulf States Camera Club Council.

The GSCCC Newsletter is available at:

<http://www.gulfstatesccc.org/html/newsletters.html>



<http://www.gulfstatesccc.org/>

Find us on Facebook



Membership Drive

While we are always eager to welcome new members our Membership drive continues. Please remember to pay your dues and to invite your friends and colleagues to our meeting and encourage them to join us this year. To continue to be eligible for competitions and receive the newsletter, you must be current on your dues. The membership form is at the end of the newsletter.

LPS COORDINATORS

Digital Projection:

Gene Bachman
dpcontestcoordinator@laphotosociety.com

Education:

Debra Canatella
educationcoordinator@laphotosociety.com

Equipment:

Mike Capone, Mark Canatella
equipmentcoordinator@laphotosociety.com

Exhibits:

Kathy Reeves
exhibitcoordinator@laphotosociety.com

Facebook:

Stephanie Ross
facebookcoordinator@laphotosociety.com

Field Trips:

fieldtripcoordinator@laphotosociety.com

Greeter/Name Tags:

Stephanie Ross, Jan Ross
facebookcoordinator@laphotosociety.com

GSCCC Representatives:

Gene Bachman - Digital
Chandan Sharma - Prints
GSCCCcoordinator@laphotosociety.com

Library:

Pat Riddick
librarycoordinator@laphotosociety.com

Monthly Competition:

Darrel LeBlanc
monthlycompetitioncoordinator@laphotosociety.com

Newsletter:

Renee Pierce
newslettereditor@laphotosociety.com

Programs:

Pam Kaster
programscoordinator@laphotosociety.com

PSA Competition:

Cindy Hunt
psaentry@laphotosociety.com

Publicity:

Mark Claesgens
publicitycoordinator@laphotosociety.com

Refreshment:

Dennis Stevens

Website:

Theresa Mullins Low
websitecoordinator@laphotosociety.com

Competition Review Chair:

Gene Bachman
pastpresident@laphotosociety.com



<http://www.psa-photo.org/>

The LPS website has a quick checklist for preparation of images for digital projection competitions. The new checklist can be found on the Monthly Competition page of the website, or by using this [link](#).

LPS Members are encouraged to submit photographs and articles for inclusion in FOCUS, the Louisiana Photographic Society Newsletter. Items received up to 3 days before the end of the month will be included in the following **month's newsletter**.

Send your submissions to:

newslettereditor@laphotosociety.com



MEMBER OF PHOTOGRAPHIC SOCIETY OF AMERICA
AND GULF STATES CAMERA CLUB COUNCIL

Membership Form

Mail completed form and dues to:

Louisiana Photographic Society
P.O. Box 83834 ,Baton Rouge, LA 70884-3834

www.laphotosociety.com

WELCOME TO LOUISIANA PHOTOGRAPHIC SOCIETY

LPS communicates to members through website, e-mail, and monthly meetings. All members are encouraged to visit the LPS website at www.laphotosociety.com for the latest on club news and events. The monthly newsletter "FOCUS" is available on the website on the first day of each month. Please provide an e-mail address below to receive club updates. If you do not receive e-mail communications after 30 days, notify LPS at treasurer@laphotosociety.com.

Select one: ☐ **Membership Renewal** ☐ **New Member** – If you are a New Member, how did you learn about LPS:

☐ Current Member ☐ LPS Website ☐ Newspaper/Magazine ☐ Social Network ☐ Other _____

Select one: ☐ **Individual Membership \$25.00/year** ☐ **Student Membership \$5.00/year–Must be a current student**

Name _____ Date _____

Address _____ City _____ State _____ Zip _____

Home Phone (_____) _____ Cell Phone (_____) _____

E-mail Address _____

☐ **Additional Family Member \$5.00/year–ONLY available with the Individual Membership, not Student Membership**

Name _____ Date _____

Mailing Address _____ City _____ State _____ Zip _____

Home Phone (_____) _____ Cell Phone (_____) _____

E-mail Address _____

SPECIFY FOCUS OF PHOTOGRAPHY:

SPECIFY AREA OF LEARNING INTEREST:

SPECIFY AREA OF INTEREST IN CLUB PARTICIPATION:

- ☐ **Competition** (set up, tally votes, present ribbons)
- ☐ **Education** (plan/teach, set up workshops and seminars)
- ☐ **Equipment** (store, transport, set up for LPS functions)
- ☐ **Exhibits** (explore locations, set up/take down exhibits)
- ☐ **Field Trips** (plan and arrange to photograph at various sites)
- ☐ **Gulf States Camera Club Council** (GSCCC liaison, collect and submit entries for GSCCC competition)
- ☐ **Library** (display and maintain materials, check-in/out)

- ☐ **Programs** (plan speakers, make arrangements for speakers at monthly meetings)
- ☐ **Projection** (set up and operate equipment for digital projection competition)
- ☐ **Publicity** (publicize programs, meetings, events)
- ☐ **Refreshments** (plan and set up refreshments)

YOUR PARTICIPATION IS GREATLY APPRECIATED!