

LOUISIANIAN



Photographic Society

# Focus





# NOVEMBER EVENTS

**November 3, 2016**

**Lagniappe with Mindy**

**Guidry**

7:00 pm Garden Center

**November 12, 2016**

**Saturday Night Live**

**6:00 pm Louisiana State**

**University Clock Tower**

**November 17, 2016**

**Monthly Meeting**

7:00 pm Goodwood Library

Digital Competition;

Theme is "Shadows"

Cover image by Renee Pierce

Louisiana Photographic Society meets on the third Thursday of each month at the Goodwood Library, 7711 Goodwood Blvd, Baton Rouge, LA 70806

Guests are always welcome. Membership dues are \$25/year. Each additional family member \$5/year

PO Box 83834

Baton Rouge, LA 70884

[www.laphotosociety.com](http://www.laphotosociety.com)

**Copyright**

© Louisiana Photographic Society, 2015.  
Unauthorized use and/or duplication of this material or images/photographs without express and written permission from author and/or owner is strictly prohibited. Excerpts and links may be used, provided that full and clear credit is given to the photographer and Louisiana Photographic Society with appropriate and specific direction to the original content.

# In This Issue

<b>President's Message</b>	<b>3</b>	<b>Field Trips</b>	<b>11</b>
		Saturday Night Live	
		Renesiaance Festival	
		Dickens on the Strand	
<b>Education</b>	<b>4</b>	<b>Winners</b>	<b>13</b>
Lagniappe, Mindy Guidry		Digital, "Shadow" theme	
Light Up the Night			
Event Photography			
Horsing Around			
<b>Member Profiles</b>	<b>7</b>	<b>Picture Perfect</b>	<b>29</b>
Featuring Cindy Hunt		Theresa Low - Autum	
<b>Competition</b>	<b>8</b>	<b>Children at Play</b>	<b>30</b>
Digital, "Shadow" Theme		Bernie Gillette offers	
		suggestions in preparation of	
		the October field trip	
<b>Exhibits</b>	<b>9</b>	<b>Congratulations</b>	<b>33</b>
Schedule for 2017		Ken Wilson	
		Kathy Reeves	
<b>Speaker Info</b>	<b>10</b>	<b>PSA Information</b>	<b>36</b>
Nathan Dewberry,		Call for images	
GoLoveAfrica project			

# Theresa's Thoughts



LPS had two exciting events this month. I hope that you participated. Our general meeting offered a sports panel of three that included professional photographers. If you attended I know that you left with enough knowledge about sports photography to get you in the game. The other event was our Smokey Mountain field trip led by Bernie Gillette which was a great success. I feel certain this experience will lead to more annual, long distance field trips. What helps make a great photography club - the camaraderie among its photographers.

I want to encourage each and every member to participate in our field trips and education classes. This includes our Lagniappe classes and critiques. These events are smaller and this is how you connect with other photographers. Another way to connect with other photographers is to volunteer in a position in the club. We always need backup help and co leaders. Our volunteers are connected closely through meetings and planning events. When you connect you learn by sharing your knowledge among photography friends.

In our Critique session on October 6th, we reviewed some 59 photographs critiqued by a professional, Jon Fishback of PSA. Those who attended the critique where the results were revealed raved about his comments that were read. Having an outside professional photographer to judge proves very enlightening in the details of the photograph. As Jon Fishback, said in an article that appeared in the

February 2010 issue of the PSA Journal "Analysis is not designed to find something wrong. It is designed to see something right and then see things that can be improved upon."

Bridget Mayo thanks everyone who helped photograph "The Special Olympics .

Remember we started collecting our dues in October and will continue at the November meeting. We do not have a meeting in December. In order to participate in the January competition your dues must be paid prior to the meeting.

Our Christmas party is December 6, 2016, 7:00 p.m. It will again be at the home of Toni Goss. I personally hope that each one of you can make it to this special event for us. We will announce the year end category winners and the photographer of the year. In addition, there will be a slide show of all of the winning images from the year. Awards, food and fellowship! Spouses are invited to join us as well. Look for details in the weekly reminder email and in the newsletter.

Go be kind, share your images, time and talent.

Theresa Mullins Low  
President

Lagniappe  
November 3, 2016  
Mindy Guidry  
7:00-9:00 pm  
Garden Center



Mindy Guidry is a locally known photographer from Breaux Bridge, La., known mostly for her style with digital photographic art. Mindy has been involved with photography for over 20 years in one form or another including having her own portrait business for a time. She continues to dabble in senior portrait photography and also works for several real estate agents doing HDR real estate



photography for their listings. However, her real passion can be found in her nature photography and her love for animals, which ties nicely into the kind of digital art she produces. Her photographic style is diverse and creative. She tries to keep her audience captivated and curious with each piece she creates.

Mindy will be here to give us a rare opportunity to watch her create some of her digital art LIVE. She will demonstrate some of her artistic techniques inside of Photoshop. She will step us through several examples of how she achieves depth and interest, by turning an ordinary photo into a piece of art. You can find some of her work on Facebook and on her website [www.mindyguidry.com](http://www.mindyguidry.com). She promises that everyone will come away with a little something that will inspire the artist in each of you.







January 8, 2017  
Sunday, 5P-9P  
Rural Life Museum  
Visitor Center  
4560 Essen Lane

## LIGHT UP THE NIGHT

Instructor Mike Cooper  
will take us through the steps of  
creating night magic with  
a flashlight!

### Equipment Required:

Camera & batteries  
Tripod  
Cable/Wireless Shutter  
release  
Flashlight -500 lumens  
or more (Tactical-type)  
Bug Spray  
Headlamp (optional)

Wear DARK clothing,  
appropriate for weather!



**November 3**  
Mindy Guidry

**January 8**  
Light Up the Night

**February 18**  
You Can Do This Too  
Event Photography

**March 4**  
Horsing Around

## YOU CAN DO THIS TOO!

### Event Photography

Join Linda Medine as she guides us through the skills and art of capturing Life's Events. Whether Senior Portraits, Group Events, Weddings, or Family Gatherings you will learn how to pose, light, and manage the shoot!

Please bring:  
Camera & Batteries  
Speedlight  
Tripod

**February 18, 2017**  
**Saturday, 9am-Noon**  
**Hilltop Arboretum**  
**Auditorium**

register online at:  
[laphotosociety.com](http://laphotosociety.com)



# HORSING AROUND

Equine Photography with Pam Kaster

## Location:

Zachary Library  
1900 Church St.  
Zachary, La. 70791

March 4, 2017  
9:30a-1:30p

Pam will lead us through the process of capturing the grace and majesty of horses. After her presentation we will join her at a nearby stable for hands-on practice.

## Please Bring:

Camera and batteries  
(No tripods or flash)

Register online at [www.laphotosociety.com](http://www.laphotosociety.com)

## Nomination of Officers

At our general meeting on November 17, 2016 LPS will elect officers for the coming year. Per our constitution, the vice-president assumes the presidency; Butch Spielman will serve as president next year. The offices of Vice-President, Treasurer and Secretary will be filled at the meeting and begin serving in 2017:

These three officers, along with the president and immediate past president make up the LPS Executive Board.

Any member may be nominated for these three elected positions, so if you're interested, please email [president@laphotosociety.com](mailto:president@laphotosociety.com) or put your name on the ballot at the meeting on the 17th. All nominations from the floor require the person nominated must be in agreement to serve.

Committee chair persons are not elected. Currently we need, a field trip assistance who will be willing to take over the position, and an assistant equipment person.

The success of this club depends on the willingness of members to serve. I hope you are willing to find a place to give your time.





# Member Profile



**Cindy Hunt**

## **Where are you located?**

Home is Baton Rouge. "Home-away-from-home" for the last few years has been New York City, New Orleans, Lake Charles, and most recently Charleston, SC.

## **How long have you been a club member?**

I have been a member of LPS since January 2011. I held several positions, including Treasurer and Board Member, GSCCC Print Competition Coordinator, and PSA Competition Coordinator, as well as participated in various committees. Since I started traveling, I make every effort to stay connected with the club.

## **How did you become interested in photography?**

My husband gave me a Canon DSLR for my birthday in 2010 because I had a strong desire to learn photography using a camera with manual settings.



## **What are your goals as far as photography are concerned or what do you hope to get out of being a club member?**

My personal photography goals are to continue learning to improve my picture taking skills and how to create my vision in post processing. I feel like I have grown as a photographer thanks to the many activities offered through LPS and from volunteering on many club projects. I have also achieved learning goals by being a member of PSA, where I completed several courses, Image Analysis, Individualized Photography, Photography Projects, Beyond the Rule of Thirds, and was accepted to the PSA Qualified Judges List. I have enjoyed the learning experiences and friendships gained from being a member of LPS.

## **What type of photography are you interested in?**

I am especially interested in photographic opportunities presented to me while traveling with my husband on job assignments in different areas. I have enjoyed shooting cityscapes, travel and architecture photography in the big cities, as well as landscapes, nature and bird photography especially while living on the backroads of Louisiana, along the Creole Nature Trail.

## **What photographers inspire you?**

Ansel Adams, Clyde Butcher, and Dede Lusk.

## **Do you use programs for post processing and if so what are your favorites?**

I mainly use Lightroom CC for organizing and post processing. I use Photoshop CC and NIK plugins only when I find the need to do something that cannot be accomplished in LR.

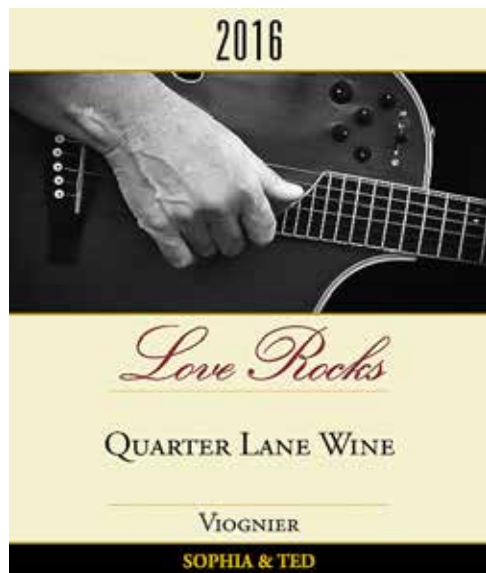


## **What equipment is in your camera bag when you go out shooting?**

Always in my bag: Canon 6D full frame, with Canon lenses 16-35mm f/2.8, 24-105mm f/4, and the "nifty fifty" 50mm f/1.8. Sometimes (but not often) in my bag: Canon lenses 70-200mm f/4 and 100-400mm f/4.5-5.6; In my bag while shooting birds and wildlife: Tamron 150-600mm and a bean bag used for shooting out of the window along the Creole Nature Trail; and finally, a tripod which gets underused.

### Anything else you want to tell us?

I am proud to have some of my personal favorites hanging in 121 Artisan Bistro in Lake Charles. If you are in the Lake Charles area or happen to be exploring the Creole Nature Trail, which is recognized as an “All-American Road,” (an awesome opportunity during winter months if you have never done this), stop by 121 (grab a bite, the food is fabulous) and view my work on display— “Shrimp Boat Harbor” in the main dining room; and on the bar walls—a New York series, and one of my personal favorites, a 5-foot panorama, “The Vineyard.”



I also use my photographs to make wine labels for Quarter Lane Wine. My husband makes the wine and I make the labels using a different image for every bottling—together we enjoy winemaking and photography—a collaboration of Two Passions.



Monthly Competition 2016 Schedule			
November	Projection	November 17	Shadows

Please use the following naming scheme for Digital Competition:

Photographer Name-number and category-image name with category being either AC (level A, color), AM (level A, monotone), BC (level B, color) or BM (level B, monotone)

Examples:

Your Name-1AC-Title.jpg and Your Name-2AM-Title.jpg

Your Name-1BC-Title.jpg and Your Name-2BM-Title.jpg

Digitally projected entries must be sent to the Digital Projection Coordinator at [dpcontestcoordinator@laphotosociety.com](mailto:dpcontestcoordinator@laphotosociety.com) no later than 8:00 pm on the Monday before the Thursday competition.

Height no more than 1200 pixels Width no more than 1920 pixels. Total size should be less than 2.3 megs. Full instructions may be found on the [LPS Website](#).

## Mentor Program

Are you new to photography or just want to get out of auto mode? If so, we have a program for you and it's called the Mentor Program. Mentoring is a practice where someone shares their knowledge and experience in photography and helps further your skills and knowledge. It can also help you gain confidence in your abilities. Are you interested in improving your photography? Do you feel unsure about how to use your camera? Our program consists of volunteer photographers within the LPS who can assist you with your questions pertaining to depth of field, shutter speed, ISO, etc. and can be very helpful for someone that needs a little extra help.

If you are interested in being a mentor or if you would like a mentor, please send the following information to [mentor@laphotosociety.com](mailto:mentor@laphotosociety.com).

Name, e-mail address, cell number, type of camera you use, and type of photography you are interested in (example: wildlife, flowers, portrait, landscape, etc.) and if you want to be a mentor or be mentored.



# Exhibits

## February 2017

### TableScapes Exhibit

We are once again teaming up with the Baton Rouge Garden Club to help them with their Tablescapes scholarship fundraising event. Baton Rouge Garden Club members will use our photographs to inspire creative and colorful table settings, which will be available for the public to view February 18-19th. There will be Best Photo and Best Tablescape competitions judged by the public and Baton Rouge Garden Club members.

**Location:** Baton Rouge Garden Center in Independence Park, 7950 Independence Blvd Baton Rouge

**Photos Due: November 30th, 2016** (contact [exhibitcoordinator@laphotosociety.com](mailto:exhibitcoordinator@laphotosociety.com) to arrange drop-off); Photos can also be delivered at the November 17th LPS meeting

**Tablescapes Display Date:** February 18-19, 2017

**Exhibit Takedown:** Photos will need to be collected from the Baton Rouge Garden Center directly following the event on February 19th. Check back for details.

**Details:** We can accept any size, prefer color photography for the most part, and the photo should have some sort of frame or backing for display. Each photo needs to include a firmly-attached tag including the photographer's name and contact info, photograph's title, and price (if offered for sale; 20% commission will be collected). Birds and animals were the subject of most photos last year, but we are also happy to have landscapes, activities such as sports, children at play, anything that tells a story that we can interpret with design. Industrial subjects and architecture are also good. We can use photos of flower and foliage but a person or landscape included would be helpful. Portraits with costume are good; since the show will be before Mardi Gras, that is always a good subject. They will need 30 to 40 photos; all may not be used in the Tablescapes but will be displayed and credited. A list of prices for our photos will be available to attendees. As this is a fund raiser for the Garden Center, our exhibitors and members will be required to pay the \$5 entrance fee to view the Tablescapes as do the Garden Club members and exhibitors.

## April 2017

### Louisiana State Archives Exhibit

Location: 3851 Essen Ln, Baton Rouge, LA 70809

## May 2017

### Bluebonnet Swamp Exhibit, Photo Competition, Photography Lecture, and Birthday Party

Location: Bluebonnet Swamp; 10503 N Oak Hills Pkwy, Baton Rouge, LA 70810

Theme: The Bluebonnet Swamp (all photos must have been taken at the Bluebonnet Swamp)

Dates: TBD

Details: All photos must be ready to hang (canvas, metal, or framed prints only). There will be no commission collected on photos sold during the event.

## July 2017

### Louisiana State Archives

Location: Louisiana State Archives Gallery; 3851 Essen Ln, Baton Rouge, LA 70809

Hang Date: Saturday, July 1st at 11:00 AM (Tentative, depends on hours due to July 4th holiday)

Take Down Date: Friday, July 28th at Noon

Theme: TBD

## October 2017

### Goodwood Library Digital and Print Exhibit

Location: Goodwood Library

Theme: The Bicentennial Celebration of Baton Rouge

# Speaker Info



## Nathan Dewberry will be our speaker November 17

While on a construction mission trip to Zimbabwe in 2013, Go Love Africa founder, Nathan Dewberry was asked by many villagers to take their picture. After taking the photos, villagers were awed by just looking at their photo on the back of the camera. Upon returning home, Nathan set out to find a way to provide quality photographs to people in remote African villages. Journalist and Photographer Aaron Williams joined the project and Go Love Africa was born.

How many photos does the average American own of himself/herself? In this age of “selfies,” personal handheld devices, and social media, it’s not unusual for a person to own hundreds of photos of themselves and their families.

But imagine if you didn’t own one photo of yourself.

It’s strange to think that a thing as simple as a photograph is not something that everyone has, but it is something largely taken for granted by people all across the world.

To have a photo of oneself or a family member is actually a rarity in some areas, especially in poorer, remote areas in most African nations – those are the areas that Go Love Africa targets.

Upon taking villagers’ portraits, battery-operated printers are used to directly print professional quality photos, and the photo is given to each person.

On the reverse side of each photo is a message of the Christian gospel typed in the villagers’ written language.

This year one of our LPS members, Renee Pierce, will join Go Love Africa’s 2016 project in Sierra Leone during the month of December. After being ravaged by the Ebola crisis in 2014, many countries in West Africa, including Sierra Leone saw a massive loss of life. According to a recent New York Times article (March 2016), 3,590 people died in Sierra Leone during the epidemic. Now that the country is again safe from Ebola, the area has a true need for love to be shown to them.

The team traveled to Uganda (2014) and Madagascar (2015) and has printed over 5,000 photographs using battery-operated printers. On the reverse side of each photo is a message of the Christian gospel in the villagers’ written language. [www.goloveafrica.com](http://www.goloveafrica.com)

## ADVOCATE

We are in full swing with The Advocate project. PLEASE use the Subject “Advocate Images.” We are asking for no more than **FIVE** images per member. This number may vary depending upon the response that we get in fulfilling the Advocates’ needs.

The subject of the images should reflect the environs of the Advocates’ subscription range. Preferred are images from across South Louisiana. Images MUST be no smaller than 1 meg and no larger than 4 meg and saved as .jpg files.

Detailed instructions for submissions may be found on our [website](#). This metadata is crucial to the Advocates’ filing and recovery system. Thus, a failure to comply in that respect, will cause your image to not be accepted.

Each image will have a caption including your name and several sentences about the image so this is an excellent way to get your name out to the general public and show your work. **New Gallery is live- [CHECK IT OUT](#) and tell your friends!**

[Previous gallery](#)



# Field Trips

## LA Renaissance Festival Hammond, LA

Weekends in Nov. and Dec.

### The Ren Fest is Your Kind of Fun!

We are a festival, theme park, theatre, holiday shopping destination, and educational experience, all rolled into one great adventure.

Every autumn the Louisiana Renaissance Festival creates the English “Village of Albright,” with more than 600 artisans, entertainers and educational demonstrators welcoming you to the best parts of the 16th century: fun, clean, safe, and educational.

Albright has a magical ambiance: the atmosphere is adventurous, exciting and romantic. Choose from more than 50 shows and a plethora of demonstrations every day on a dozen stages. Search a hundred booths for unique handmade creations. <http://www.larf.org/>



### SATURDAY NIGHT LIVE

November 12, 2016

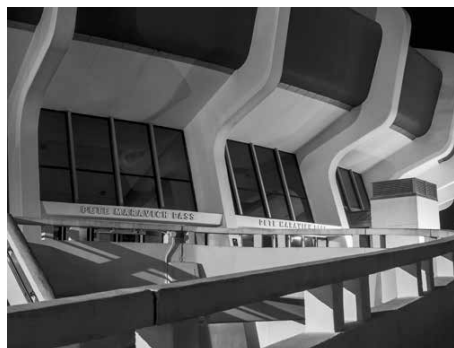
6:00PM

Louisiana State University  
Clock Tower

A night photography adventure on the campus of Louisiana State University. Recently several of us visited this site to determine the potential for an enjoyable and challenging field trip, we were not disappointed.



This venture will make you look for light sources other than the one day time light source all photographers use. Add in unique angles, interesting shadows and you will be rewarded with photos that you'll be proud to print and display.



This trip will invite you to experiment with exposures. You may want to bracket exposures to overcome scenes of strong contrast. You may discover a topic that you would like to paint with light.

Working in low light, often your cameras auto focus feature is challenged, causing the photographer to switch to manual. While it can be difficult to manually focus through the viewfinder, especially when your subject is far away. Consider switching to Live View, use the magnifying glass button to insure sharp focus.

Long exposures are the rule so, naturally tripods and remote cable releases are encouraged. You may want to bring a table top tripod or a bean bag should you desire a low angle. As with most topics, lens from ultra-wide to telephoto work well. Personally focal lens in excess of 200mm may find limited use. Lens hoods to reduce the possibility of light flare. Flashlight is a must tool for night photography.

Night photography always seems to offer the photographer something new to photograph, we all love that. So join us, you won't be disappointed.

**Dickens on the Strand  
Galveston Island, TX  
December 2, 3 & 4**

**W**ow! This trip promises exciting photo opportunities for photographers of any skill level. Not only for photographers but for all those in the family who are usually bored standing around while the photographer is puzzled about f-stops and shutter speeds?



This annual Victorian holiday features parades, non-stop entertainment on six stages, strolling carolers, roving musicians, bagpipers, jugglers and a host of other entertainers. Costumed vendors peddle their wares from street stalls and rolling carts laden with holiday food and drink, Victorian-inspired crafts, clothing, jewelry, holiday decorations and numerous gift items.

The unique Victorian architecture offers interest to all architectural photo buffs as well as the Bishop's Palace and the 1877 Tall Ship "Elissa."

<http://www.galvestonhistory.org/events/> A beautiful adventure for the entire family.

# Christmas Party and Year End Awards

at the home of  
Toni Goss  
18733 Lake Harbour Ave.  
Baton Rouge, LA  
December 6, 7:00 pm

PLEASE Come join us for the FUN!

LPS will have the meats,  
condiments and drinks.

Please plan to bring your favorite dish.

A-E	Appetizer
F-M	Salad or Vegetable
N-S	Casserole
T-Z	Dessert

See you there!!!



# Level A Winners

## COLOR DIGITAL

1st Place	Haunting Innocense	Mindy Guidry
2nd Place	Don't Forget to Floss	Robin Stevens
3rd Place	The Count	Kathy Reeves
Honorable Mention	Casper In the Woods	

## MONOTONE DIGITAL

1st Place	Ghost Girl in the Bayou	Cathy Smart
2nd Place	Who Let the Ghosts Out?	Linda Medine
3rd Place	Someone Put a Bug in My Ear	Linda Medine



*Haunting*

*Innocense*

Mindy Guidry  
Level A, Color, 1st Place





*Don't Forget to Floss*  
Robin Stevens  
Level A, Color, 2nd Place





*The Count*  
Kathy Reeves  
Level A, Color, 3rd Place





*Casper In the Woods*  
Robin Stevens  
Level A, Color, Honorable Mention



*Ghost Girl in the Bayou*  
Cathy Smart  
Level A, Monotone, 1st Place





*Who Let the Ghosts Out?*  
Linda Medine  
Level A, Monotone, 2nd Place



*Someone Put a Bug in My Ear*  
Linda Medine  
Level A, Monotone, 3rd Place



# Level B Winners

## COLOR DIGITAL

1st Place	Why So Serious	Moinul Mahdi
2nd Place	We've Been Wating For You	Linda Weinstein
3rd Place	Anne of Autum	Tammy Tate
Honorable Mention	Comet Catcher	Pat Riddick

## MONOTONE DIGITAL

1st Place	Night of the Living Dead	Dianne Richards
2nd Place	Every Body Welcome	Patrick Bullock
3rd Place	I Live for the Hunt	Moinul Mahdi



*Why So Serious*  
Moinul Mahdi  
Level B, Color, 1st Place



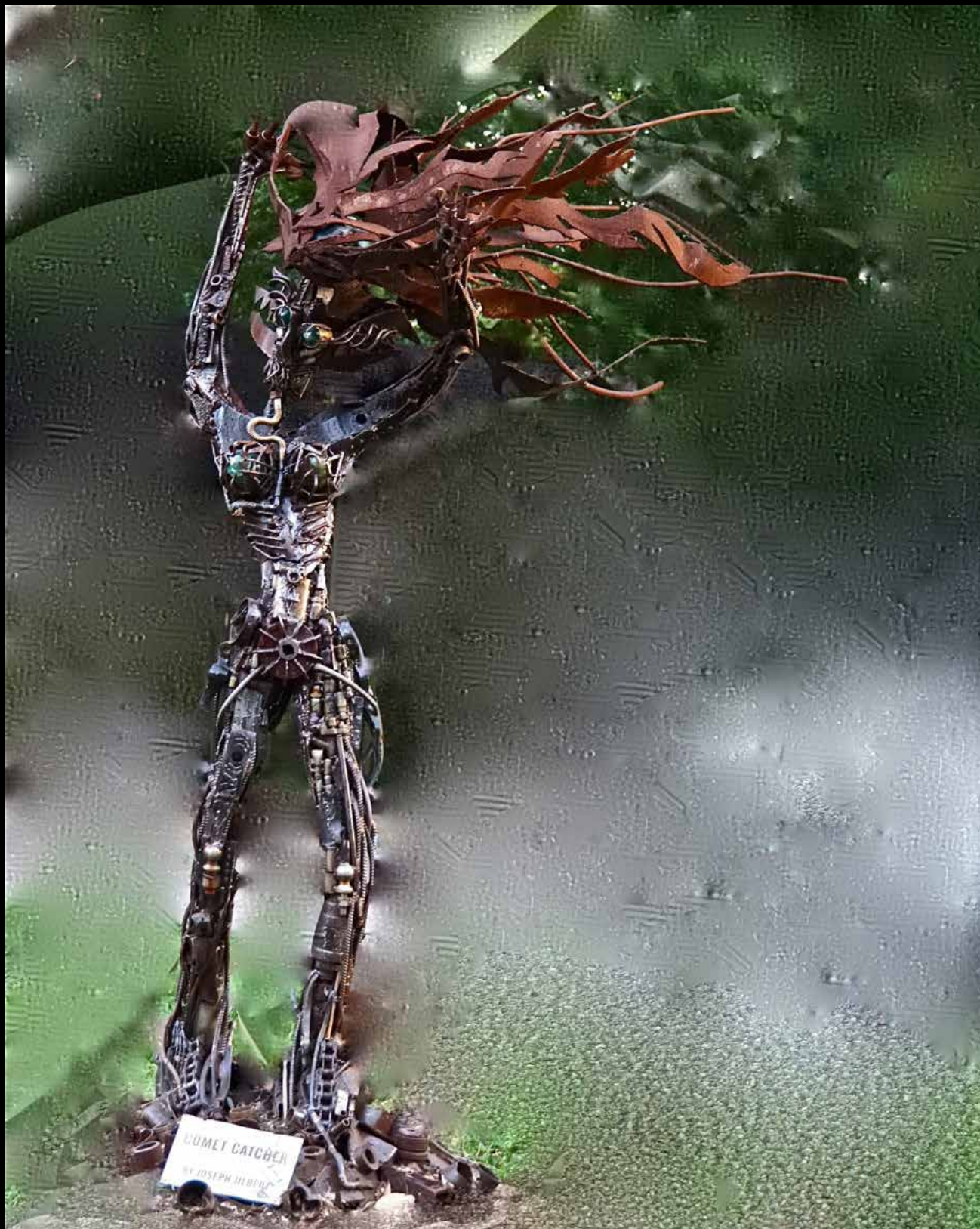


*We've Been Waiting For You*  
Linda Weinstein  
Level B, Color, 2nd Place



*Anne of Autum*  
Tammy Tate  
Level B, Color, 3rd Place





*Comet Catcher*  
Pat Riddick  
Level B, Color, Honorable Mention



*Night of the Living Dead*  
Dianne Richards  
Level B, Monotone, 1st Place





*Every Body Welcome*  
Patrick Bullock  
Level B, Monotone, 2nd Place



*I Live for the Hunt*  
Moinul Mahdi  
Level B, Monotone, 3rd Place



# Picture Perfect

By [Theresa Mullins Low](#)

Autumn is here. Thanksgiving is fast approaching. Autumn in itself is a wonderful time in Louisiana. Our weather is so pleasant with temperatures in the low 70's. Thanksgiving is a day to remember our blessings, to sit and relax and just be thankful with our family and friends. This is a perfect time to get those snapshots of the family. But don't forget your creative shots with those pumpkins or even your Thanksgiving table.

Be sure to plan the family photo prior to their arrival. Check out the best place with the most flattering light. A window may offer some soft light that is filtered and illuminates the room. Keep harsh light to the side and not behind the subject or backlighting may occur. If light is behind try using flash to light the



face. Take test shots. I like to set up my tripod with camera in advance for that perfect family photo. If you use your tripod, and your camera has a timer you can run and jump in that spot just for you! Since you have already planned where these members will be placed, keep in mind their heights placing to create a line. The photo should not have much room above their heads and members should fill the frame. In other words get up-close and personal. Lines cause

impact in a photo. This is when you may want to place family members in a triangle effect. Position the tallest member or standing members in the center while holding the turkey platter with a progression of shorter members on either side. Children almost never pose and will have that special look that hints of their personality. I love those looks!

Know your camera. When images are taken inside and a flash is not used generally a high ISO will be necessary. However, a higher ISO usually renders noise so keep ISO as low as possible if you plan to make a large print. Auto ISO will choose the ISO and this can be a starting point. Turn on additional lighting when possible for a lower ISO. Shoot in aperture priority with a low f-stop such as f/2.8 or 4. These low f stops allow for more light on the subject and blurs your background. When making a purchase for your next lens consider a fast lens - a lens that offers a low f number offers more light. If a point and shoot is used a flash is probably necessary. My pet, Tia, was taken outside with a low f stop and high shutter speed which stops action (f/2.8, 1/1600, ISO 400, 175 mm).



Our next Louisiana Photographic Society meeting is being held November 17, 2016 at 7:00 p.m. at the Goodwood Library, (large conference room on the 1st floor) and is held every third Thursday of each month. The scheduled guest speaker is Nathan Dewberry of Go Love Africa. See our website for updates at <http://www.laphotosociety.com>

# Children at Play

by Bernie Gillette

Truly a favorite session of mine is “Children at Play.” My first attempt with this topic came about in 1985 in a playground near my home. Even though this was my first attempt the end results from the session with the 3 year old girl surprised everyone including myself. Today, that little three year old girl “Anna” has three of her own. I have been fortunate to have had the privilege to photograph her wedding and all three of her children, family sessions and various other events.

I’d like to share some things I learned from that first session. Today we can omit what was my first tip and that was to bring plenty of film.

## Scheduling

Prior to any session, children or family, I have a pre-session consultation with the client. Since this topic is dedicated to photographing children, scheduling the session is of prime importance. It is very important to fit our schedule to theirs. For babies, we want the best time of day for them. After nap and after eating is often their best time. This also applies to preschoolers.

Should your session be outdoors, as with most outdoor sessions, early morning or late afternoon sessions are preferable.



## Be Prepared

Like any photo assignment, you must be prepared. Your camera toys must be ready to perform. Camera batteries must be fully charged as well as fresh batteries for your speed light. You must have a solid game plan, including lens selection, preferred camera settings, aperture, shutter and ISO.

For babies, I often use studio strobes for the scene, especially before the age one year. For older, more mobile children I will use on camera flash when needed. All my tools must be in good order.



shyness, you may have to tell them a story. It’s important to overcome this issue.

I say most of the time, because I recall an instance where I had a 4 year old who simply was not going to cooperate. I tried for three hours without success, no amount of happy meals, ice cream or other bribes worked. Sometimes it just might not happen.

## Be Persistent

I guess this is pretty much the same as being patient. Keep shooting, encourage them to move to the desired location, creating the desired attractive background and lighting you seek. Talk to them, let them be themselves. Did I mention keep shooting?

## Getting Down

You really don’t want a lot of images shooting down, simply not a good idea. Get yourself down to their level, sit or lay on the floor. For me the real test is getting back up- often a



## Patience

Understand this is going to be a challenge, it can try your patience, but patience you must have. Maintain your cool. For most of the time, if it’s not working keep after it, eventually it will all change and rewarding images will come your way. Allow some time for the child to overcome their





miracle happens.

## Playgrounds

Of all the tips included in this article this is the gold medal of tips. Playgrounds are for kids, they love them. Patience, Persistence and Getting Down become minor issues. Expressions are unlimited, they become relatively stationary as they play on the apparatus. They are at your level, no need to get down. They are fast, the older you become the faster they become. You can get them involved by suggesting would you like to try the swing. They are eager to participate.

## Show Them the Images

They become excited and more manageable when you show them the images. This keeps the energy up and keeps them involved. Interact with them, don't hide behind the camera. Talk to them, let them know you're there. Their attention span is limited. You need to keep them engaged and excited. In the end you will be rewarded with remarkable photos.

## Bribes

Not necessarily candy or happy meals. But little tricks of the trade if you will. If you sit over here and let me get a few photos, I'll let you wear my hat. Bribe them with things they can do. "Can you get up on this step or can you sit on this pretty chair." Making it

a fun thing is often the key. Bring a small bag of small toys is a good idea. Allowing them to reach into the bag to see what toy they will discover, often creates a wonderful expression.

## Cheese

A very bad idea is to ask the child to say "Cheese." Often you get a gritty, ugly, unnatural, terrible grin. Did I mention a bad idea? Letting the child be themselves is the best thing that can happen. Smiling faces are great, but not always the best. Whenever people smile, muscles in their face cause them to squint, resulting in closing the eyes. Some more than others. Eyes are often a key eliminate in the image.

## Unaware

Often capturing a child at play and being unaware of the photographer produces the best results. Especially if you can take advantage of available light. Should you find yourself in this position, make sure your camera settings are correct and simply keep shooting. For the most part I use my 70mm-200mm f2.8 lens and a shutter speed of 1/200 to get these unaware



images.

## Stay Alert

Stay alert, keep a keen eye out for the unexpected. Often a child will do something no one expects or give an unlikely expression. The results are often one of a kind. There

is an old National Geographic saying back from film days. "You can tell a good photographer by the size of his trash can discards." Today there is no excuse to limit your shots of children. You will have blurs, poor composition and remarkable expressions.

## Clothing

Many years ago I had a session at a playground. Mom brought her 4 year old to the park dress in dark blue coveralls and light blue shirt. Very nice combination. Nearby, there was a puddle. The youngster saw the water and jumped into, exiting wet and muddy. So much for this session.

While this is a rare happening, it's always a good idea to include changes. Food and drink can and does stain shirts and such. Bringing extras is a good idea.

When working outdoors, I request that parents have the kids wear clothing of earth tones - blues, browns, tans, reds, yellows, oranges and even LSU purple all seem to work. I also recommend that they omit logos or cartoon images. I want all the attention to go to the kid.

## Props

I encourage parents to bring the kids favorite toys as they become props. Recently Cooper came to the playground with his 5 favorite Hot Wheels. It was just the best idea. Including props adds another eliminate of interest to the image as well as distracting the child's interest from the photographer, producing good results.

## Lighting

Whenever my session is indoors, I'll use my strobes and umbrellas. Generally indoor sessions are posed or with babies slight movement. I like to have control of the light. However, I also look for the beautiful effects of natural window light. Usually when

this opportunity occurs, I must increase my ISO allowing for a faster shutter.

Outdoor sessions there are two considerations. First is available or natural light and is preferred whenever the conditions exist. I desire a soft light that illuminates the eyes. Usually on an overcast day. However, when doing an outdoor session one cannot rely on the conditions, hence flash is introduced.

I used a speedlight mounted on a bracket. The bracket allows me to keep the speedlight directly over the lens in either vertical or horizontal position. Plus the elevated position reduces the chances of red eye. Typically, I will use ETTL and I will set the flash output to one stop less than the cameras aperture. Should my lens be set to f5.6 my flash will be set to f4, one stop less. This changes depending on the conditions. This is a common practice that many photographers use on a bright day. This eliminates raccoon eyes and produces a nice catch light in the subject's eyes.

Go get'em, sadly, there only kids once.



### Lightroom Performance Series Continues

The Lightroom Performance series of blog posts is proving popular. In case you've missed any, here's the index of posts:

- [Lightroom Performance](#) – The Complete Series on Optimizing Lightroom's Speed
- [Lightroom Performance](#) – Debunking Myths
- [Lightroom Performance](#) – What Computer Hardware Do I Need?
- [Lightroom Performance](#) – General System Maintenance
- [Lightroom Performance](#) – Preferences & Catalog Settings
- [Lightroom Performance](#) - Previews & Caches
- [Lightroom Performance](#) - Workflow Tweaks



Now accepting your \$25.00 dues for next year. A change for this year. In order to participate in competitions in January 2017, you must pay your dues prior to the meeting. We do not have a meeting in December so this means you need to pay at the October or November meeting or mail in by mid December. You will also need to complete a new member registration form which is included at the end of the newsletter. Please check off at least one area you would be willing to help.



*Call for  
Member  
Profiles*



**D**o you enjoy getting to know other club members? Do you come to meetings and find there a lot of people you don't know? Well, there is a solution to that. Fill out a member profile and we will run it in the newsletter. You will get to know a little about your fellow members and they will get to know you.

We now have close to 200 members and limited time to get to know them all. This is a way to do a brief introduction. You may even find someone who has interests similar to yours and they will become a photog partner. It is easy to do. Just go the the [link](#) provided and answer a few questions, attach a photo of yourself and up to 3 additional images and hit send. It is that easy.

Here is the [link to submit your profile](#).

Thanks in advance for your participation and support.

[www.sportsshooter.com](http://www.sportsshooter.com) an informative site referred by a sports photographer in Philly area. I think those who have a interest in sports photography will find this site of interest. Lots of info listed...



# *Congratulations!*

In the 2015-2016 Projected Image Division Interclub Competition

**Ken Wilson** won Best of the Best for his image Balerina

**Kathy Reeves** won Silver in Group D for her image Blue Haze

**Kathy Reeves** also won three awards in the 2016 PSA International Exhibition  
Projected Image Division Gold Metal –Best in Show- White Horses of the Camargue  
Projected Image Division Bronze- Metal Winter White  
Wildlife HM – Cattle Egret Takeoff

If you care to see all of the images and winners of other PSA competitions, please visit  
<https://psa-photo.org/index.php?2015-2016-season-competitions>



**Ken Wilson**  
**Balerina**  
**Best of the Best**



**Kathy Reeves  
Silver in Group D  
Blue Haze**



**PID  
Kathy Reeves  
Gold Metal –Best in Show-  
White Horses of the Camargue**



**PID  
Kathy Reeves  
Bronze- Metal  
Winter White**





**Theme:** Southern Sights

Awards and Ribbons:

The Art Show in the Orangerie

First Place\* – \$400

Second Place\* – \$300

Third Place\* – \$200

Honorable Mention\* – \$150

Merit Awards

The Photography Show in the Conference Center

First Place\* – \$400

Second Place\* – \$300

Third Place\* – \$200

Honorable Mention\* – \$150

Merit Awards

\*All award-winning works will be displayed following the show at the Shaw Center for the Arts for the month of April.

### Eligibility

This show is open to all U.S. residents 17 years of age and older and to all art media except video and film. Works must be original, must have been produced in the past three years and must never have been exhibited in Brush With Burden. All artwork must be priced and available for sale, including frame.

### Submission

The 2017 Brush with Burden Art Show and sale's entry process will be conducted using CaFÉ™ (CallforEntry.org™), a Web-based service that allows artists to submit images and entry fees online.

- Log on to callforentry.org to set up your artist profile.
- Select "Brush With Burden 2017 Art Exhibition."
- Upload images. (These must first be added to your portfolio.)
- If you check out, you will need to create a new profile.
- No price changes once submitted to CaFÉ™.
- Any artwork that differs from the digital image will be disqualified.
- All artwork must be the sole work of the submitting artists.

### Fees

A nonrefundable fee of \$20 for one entry and \$15 for each additional entry (up to six entries) should be submitted. Fees can be paid online or can be mailed to: LSU AgCenter Botanic Gardens, Attn: Pamela Rupert, 4560 Essen Lane, Baton Rouge, LA 70809. Make checks payable to BHS, with "Brush With Burden entry fee" in memo line. All checks must be postmarked by Jan. 20, 2017. (Registration is not complete until fee is received.)

Visit the [Burden Horticulture Society website](http://Burden Horticulture Society website) for additional information.



<http://www.psa-photo.org/>

In addition to the interclub competitions you, as an individual member of PSA, can enter contests. Some are digital and some are print. Categories include Individual Creative, Individual Portrait, Photo Essay, Nature, Photojournalism, Photo Travel, and Pictorial Print. By visiting the links provided you will find all the guidelines and deadlines for submitting as well as galleries of previous winners. We as a club are limited to 6 images every other month but you as an individual member may submit on your own. I encourage you to consider [joining PSA](#).

## Here is a partial list of the member benefits you receive for only \$45.00 a year:

- Opportunity to submit articles for potential publication in the PSA Journal
- Access to My PSA free web site services (e.g., Image Evaluation, Mentors, Consultants, resource links, up-to-date product and book reviews)
- Free online Individualized Photography Course, Advanced Photography Course, and Image Analysis Course
- Free Study Groups: online for digital images and via mail for prints
- Free services (e.g., Species Identification Service, Photo Travel Planning Service, Digital Product Information)
- Publication of photos on the PSA web site (e.g., a photo in the New Member Gallery on joining, in the Show Your Stuff Gallery on renewing for year two, and in ROPA Galleries following receipt of a PSA Distinction)
- Creation of a personal photo gallery on the PSA web site for posting up to twenty (20) images and a biography
- Competitions for specific topics/themes (e.g., Creative, Portrait) or format (e.g., 3D, digital essays, story boards, B&W prints)
- Reduced fee for PSA Adventures (e.g., Humanitarian trip to Cuba, cruises)
- Discounts on photography-related products and services

## PSA COMPETITION PHOTOGRAPHIC SOCIETY OF



<http://www.psa-photo.org/>

***Now accepting images for the next round of competition***

We are allowed to submit 6 images per round. Please send 2 or 3 of your best so the team has a good pool of images to choose from and can send a variety. If you have any questions or need assistance in preparing images, contact the PSA Rep at [psaentry@laphotosociety.com](mailto:psaentry@laphotosociety.com).

### Entry Deadline

LPS members in good standing may submit entries by the 5th of the month prior to each round; it is requested that members submit no more than 3 images per round.

### Category

Projected Image Division

General Category (open to all digital images, including color, B&W, and manipulations)

### Image Requirements

Format: JPEG only

Color Space: sRGB recommended

Image Size: HORIZONTAL - MAX 1024 WIDE; VERTICAL - MAX 768 TALL

File Name: Title of Image

### Submit Entries

Email to: [psaentry@laphotosociety.com](mailto:psaentry@laphotosociety.com)

Subject Line: PSA Competition

Body of Email:

Title of Image - Your Name

Attach image



## WELCOME TO LOUISIANA PHOTOGRAPHIC SOCIETY



LPS communicates to members through website, e-mail, and monthly meetings. All members are encouraged to visit the LPS website at [www.laphotosociety.com](http://www.laphotosociety.com) for the latest on club news and events. The monthly newsletter "FOCUS" is available on the website on the first day of each month. Please provide an e-mail address below to receive club updates. If you do not receive e-mail communications after 30 days, notify LPS at [treasurer@laphotosociety.com](mailto:treasurer@laphotosociety.com)

**Select one:** ☐ Membership Renewal ☐ New Member

If you are a New Member, how did you learn about LPS:

☐ Current Member ☐ LPS Website ☐ Newspaper/Magazine ☐ Social Network ☐ Other \_\_\_\_\_

**Select one:** ☐ Individual Membership \$25.00/year ☐ Student \$5.00/year—Must be a current student

Name \_\_\_\_\_ Date \_\_\_\_\_

Address \_\_\_\_\_ City \_\_\_\_\_ State \_\_\_\_\_ Zip \_\_\_\_\_

Home Phone ( ) \_\_\_\_\_ Cell Phone ( ) \_\_\_\_\_

E-mail Address \_\_\_\_\_

☐ Additional Family Member \$5.00/year—ONLY available with the Individual Membership, not Student Membership

Name \_\_\_\_\_ Date \_\_\_\_\_

Mailing Address \_\_\_\_\_ City \_\_\_\_\_ State \_\_\_\_\_ Zip \_\_\_\_\_

Home Phone ( ) \_\_\_\_\_ Cell Phone ( ) \_\_\_\_\_

E-mail Address \_\_\_\_\_

### SPECIFY FOCUS OF PHOTOGRAPHY:

### SPECIFY AREA OF LEARNING INTEREST:

### SPECIFY AREA OF INTEREST IN CLUB PARTICIPATION:

- ☐ Competition (set up, tally votes, present ribbons)
- ☐ Education (plan/teach, set up workshops and seminars)
- ☐ Equipment (store, transport, set up for LPS functions)
- ☐ Exhibits (explore locations, set up/take down exhibits)
- ☐ Field Trips (plan and arrange to photograph at various sites)
- ☐ Gulf States Camera Club Council (GSCCC liaison, collect and submit entries for GSCCC competition)
- ☐ Library (display and maintain materials, check-in/out)
- ☐ Programs (plan speakers, make arrangements for speakers at monthly meetings)
- ☐ Projection (set up and operate equipment for digital projection competition)
- ☐ Publicity (publicize programs, meetings, events)
- ☐ Refreshments (plan and set up refreshments)

YOUR PARTICIPATION IS GREATLY APPRECIATED!

## 2016 LPS OFFICERS

### President:

Theresa Low

[president@laphotosociety.com](mailto:president@laphotosociety.com)

### Vice President:

Butch Speilman

[vicepresident@laphotosociety.com](mailto:vicepresident@laphotosociety.com)

### Past President:

Linda Medine

[pastpresident@laphotosociety.com](mailto:pastpresident@laphotosociety.com)

### Secretary:

Cathy Smart

[secretary@laphotosociety.com](mailto:secretary@laphotosociety.com)

### Treasurer:

Janet Gelpi

[treasurer@laphotosociety.com](mailto:treasurer@laphotosociety.com)

## 2016 LPS COORDINATORS

### Critiques

Elizabeth Mangham

### Digital Projection:

Gene Bachman

[dpcontestcoordinator@laphotosociety.com](mailto:dpcontestcoordinator@laphotosociety.com)

### Education:

Bridget Mayo/Debra Canatella

[educationcoordinator@laphotosociety.com](mailto:educationcoordinator@laphotosociety.com)

### Equipment:

Mark Canatella

[equipmentcoordinator@laphotosociety.com](mailto:equipmentcoordinator@laphotosociety.com)

### Exhibits:

Cris Garcia

[exhibitcoordinator@laphotosociety.com](mailto:exhibitcoordinator@laphotosociety.com)

### Facebook:

Stephanie Ross

[facebookcoordinator@laphotosociety.com](mailto:facebookcoordinator@laphotosociety.com)

### Field Trips:

Bernie Gillette

[fieldtripcoordinator@laphotosociety.com](mailto:fieldtripcoordinator@laphotosociety.com)

### Greeter/Name Tags:

Caleb Harris

[facebookcoordinator@laphotosociety.com](mailto:facebookcoordinator@laphotosociety.com)

### GSCCC Representatives:

Gene Bachman - Digital

LaTonya Elmore - Prints

[GSCCCcoordinator@laphotosociety.com](mailto:GSCCCcoordinator@laphotosociety.com)

### Library Resources:

Helen Haw

[librarycoordinator@laphotosociety.com](mailto:librarycoordinator@laphotosociety.com)

### Monthly Competition:

Darrel LeBlanc

[monthlycompetitioncoordinator@laphotosociety.com](mailto:monthlycompetitioncoordinator@laphotosociety.com)

### Mentor Coordinator:

Tammy Heil

[mentor@laphotosociety.com](mailto:mentor@laphotosociety.com)

### Newsletter:

Renee Pierce

[newsletereditor@laphotosociety.com](mailto:newsletereditor@laphotosociety.com)

### Programs:

Pam Kaster

[programscoordinator@laphotosociety.com](mailto:programscoordinator@laphotosociety.com)

### PSA Competition:

John Crifasi

[psaentry@laphotosociety.com](mailto:psaentry@laphotosociety.com)

### Publicity:

Jackie Summers

[publicitycoordinator@laphotosociety.com](mailto:publicitycoordinator@laphotosociety.com)

### Refreshment:

Dennis Stevens

### Website:

Renee Pierce/Gail Dixon

[websitecoordinator@laphotosociety.com](mailto:websitecoordinator@laphotosociety.com)

### Competition Review Chair:

Linda Medine

[pastpresident@laphotosociety.com](mailto:pastpresident@laphotosociety.com)



Check out our  
[Facebook Page](#)

The LPS website has a quick checklist for preparation of images for digital projection competitions. The new checklist can be found on the Monthly Competition page of the website, or by using this [link](#).

LPS Members are encouraged to submit photographs and articles for inclusion in FOCUS, the Louisiana Photographic Society Newsletter. Items received up to 3 days before the end of the month will be included in the following month's newsletter.

Send your submissions to:

[newsletereditor@laphotosociety.com](mailto:newsletereditor@laphotosociety.com)

